



Self Storage Express Pack

Prepared by Carol Campbell

Latitude: 37.607698
Longitude: -77.561729

8975 Three Chopt Rd
Richmond, VA 23229
Donut: 0-1.0 mile

8975 Three Chopt Rd
Richmond, VA 23229
Donut: 1.0-3.0 mile

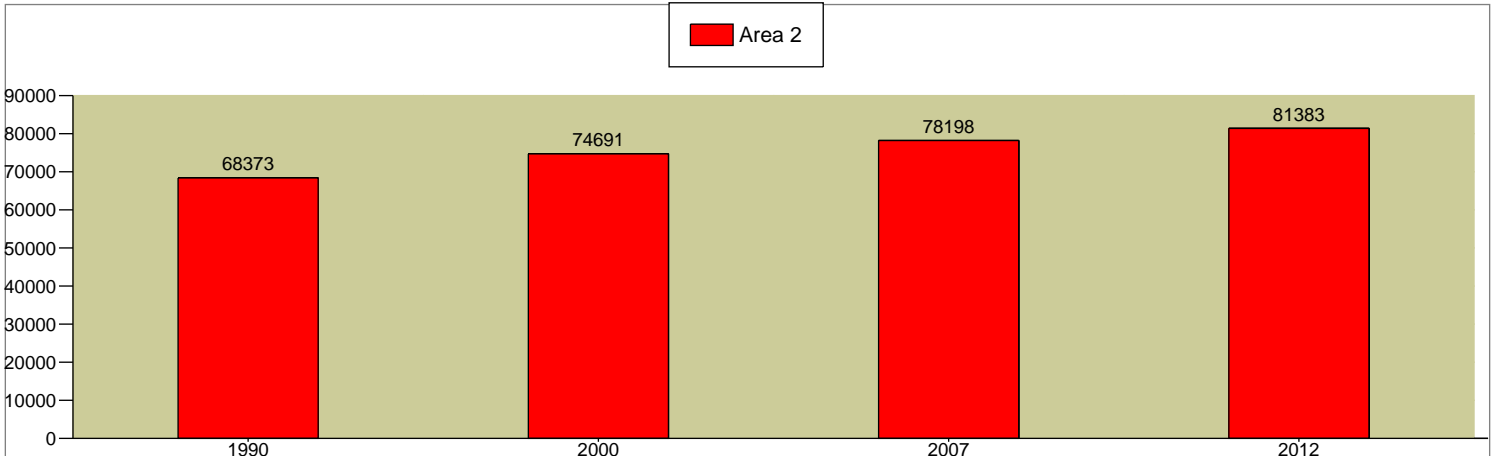
8975 Three Chopt Rd
Richmond, VA 23229
Donut: 3.0-5.0 mile

2000 - 2007 Population Annual Rate	0.09%	0.74%	0.92%
2007 - 2012 Population Annual Rate	0.55%	0.8%	0.89%

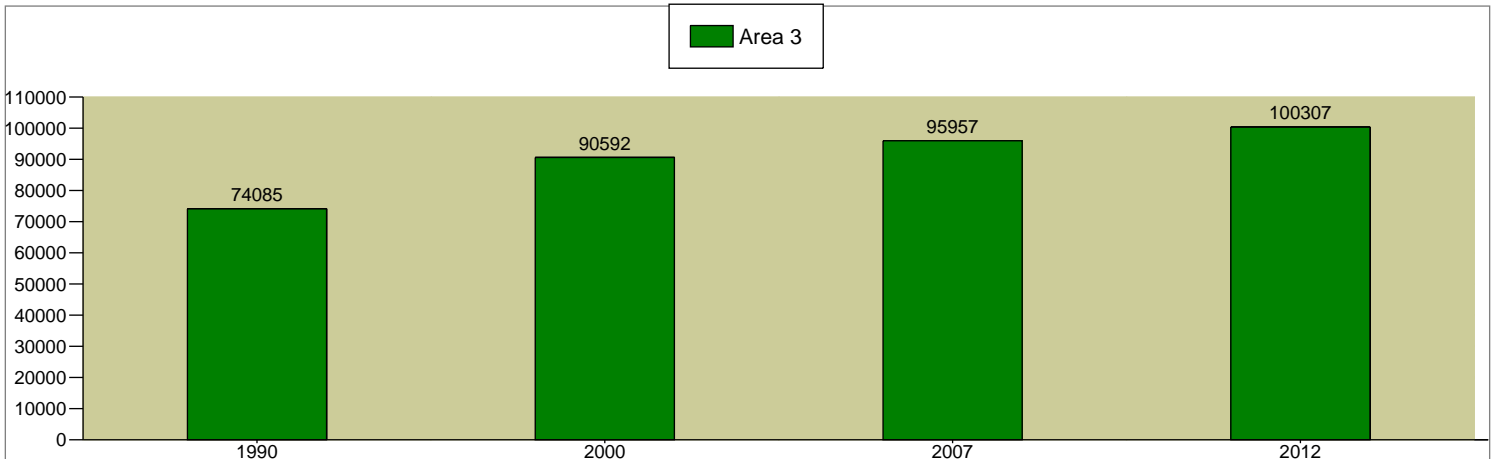
Total Population



Total Population



Total Population



Source: U.S. Bureau of the Census, 2000 Census of Population and Housing. ESRI converted 1990 Census data into 2000 geography. ESRI forecasts for 2007 and 2012.



Self Storage Express Pack

Prepared by Carol Campbell

Latitude: 37.607698
Longitude: -77.561729

8975 Three Chopt Rd
Richmond, VA 23229
Donut: 0-1.0 mile

8975 Three Chopt Rd
Richmond, VA 23229
Donut: 1.0-3.0 mile

8975 Three Chopt Rd
Richmond, VA 23229
Donut: 3.0-5.0 mile

2000 Population by Sex

Males	46.9%	47.3%	47.2%
Females	53.1%	52.7%	52.8%

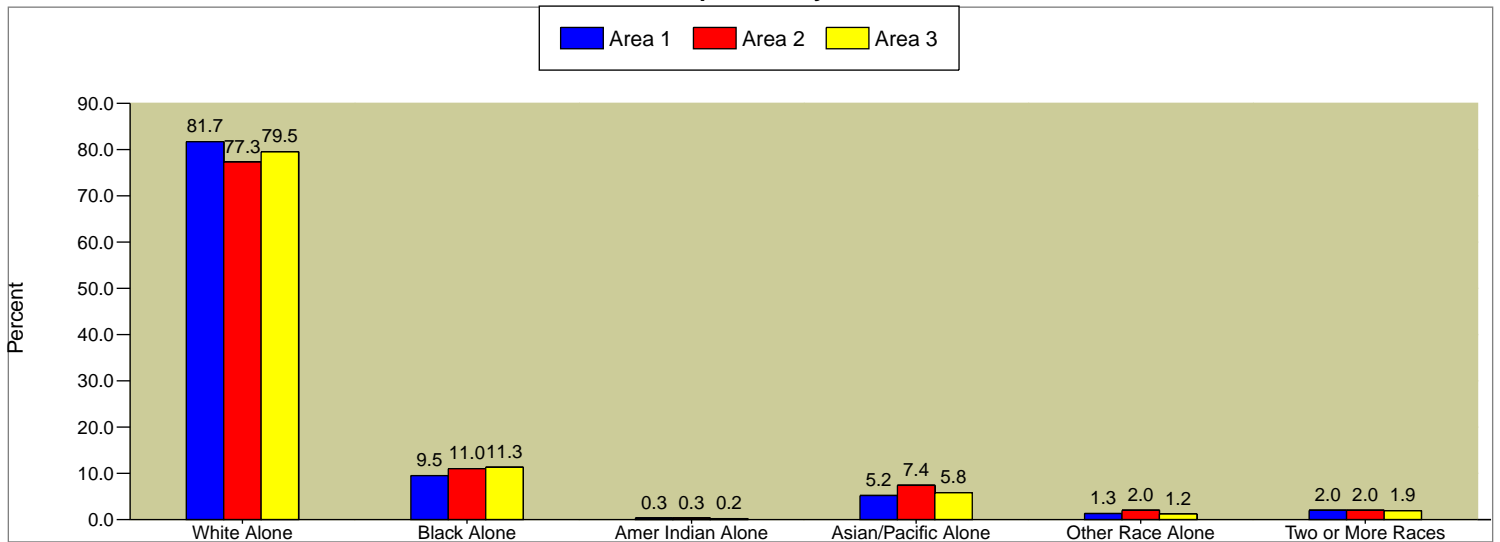
2007 Population by Sex

Males	47.1%	47.6%	47.6%
Females	52.9%	52.4%	52.4%

2012 Population by Sex

Males	47.5%	47.7%	47.7%
Females	52.5%	52.3%	52.3%

2007 Population by Race



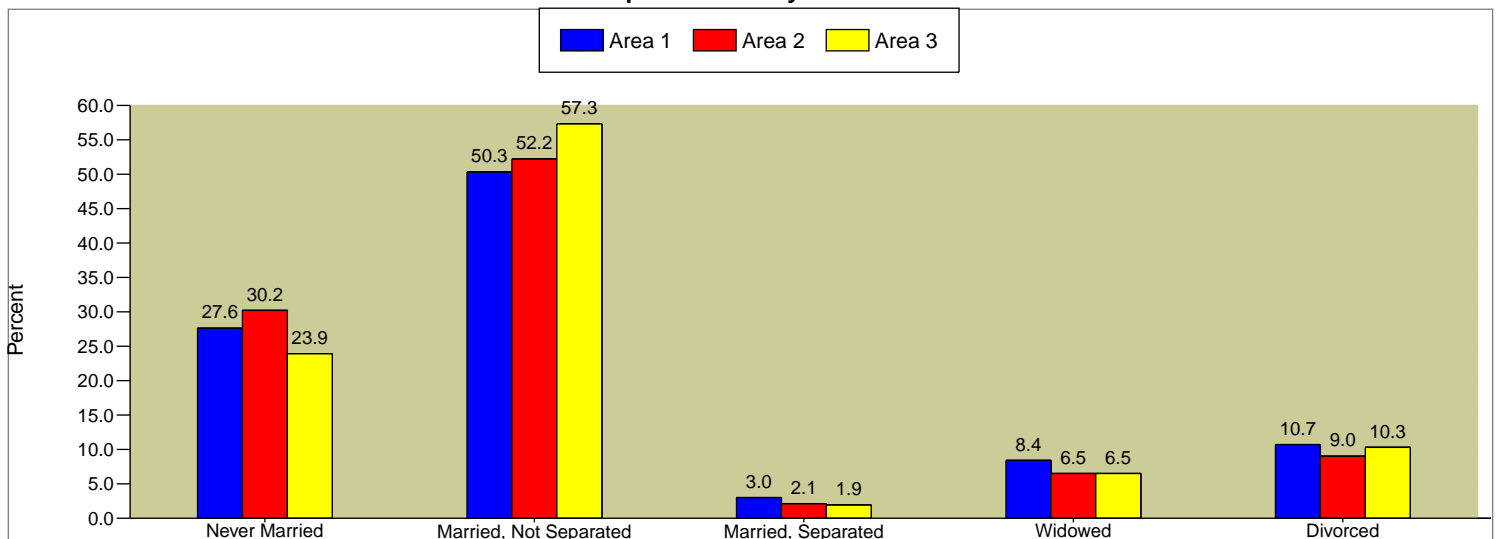
2007 Hispanic Origin

4.3%

4.4%

3.3%

2000 Population 15+ by Marital Status



Data Note: Persons of Hispanic Origin may be of any race

Source: U.S. Bureau of the Census, 2000 Census of Population and Housing. ESRI forecasts for 2007 and 2012.



Self Storage Express Pack

Prepared by Carol Campbell

Latitude: 37.607698
Longitude: -77.561729

8975 Three Chopt Rd
Richmond, VA 23229
Donut: 0-1.0 mile

8975 Three Chopt Rd
Richmond, VA 23229
Donut: 1.0-3.0 mile

8975 Three Chopt Rd
Richmond, VA 23229
Donut: 3.0-5.0 mile

2000 Population by Age

	8975 Three Chopt Rd	8975 Three Chopt Rd	8975 Three Chopt Rd
Total	9,926	74,693	90,592
0 - 4	5.5%	5.6%	6.7%
5 - 9	5.3%	5.8%	6.8%
10 - 14	5.3%	5.8%	6.4%
15 - 19	5.3%	6.9%	5.2%
20 - 24	6.9%	8.8%	4.6%
25 - 34	16.3%	16.6%	16.1%
35 - 44	15.0%	15.0%	18.0%
45 - 54	12.9%	13.8%	14.8%
55 - 64	9.1%	8.0%	8.0%
65 - 74	9.8%	6.8%	6.2%
75 - 84	6.8%	5.4%	5.2%
85+	1.8%	1.6%	1.9%

2007 Population by Age

	8975 Three Chopt Rd	8975 Three Chopt Rd	8975 Three Chopt Rd
Total	9,980	78,202	95,957
0 - 4	5.2%	5.2%	6.4%
5 - 9	5.2%	5.3%	6.8%
10 - 14	5.1%	5.7%	6.7%
15 - 19	5.6%	7.7%	6.1%
20 - 24	5.8%	8.8%	5.1%
25 - 34	15.0%	14.9%	12.1%
35 - 44	14.3%	13.6%	17.0%
45 - 54	13.9%	14.3%	16.0%
55 - 64	10.5%	10.7%	10.9%
65 - 74	7.0%	5.7%	5.5%
75 - 84	9.5%	5.7%	5.1%
85+	2.8%	2.4%	2.3%

2012 Population by Age

	8975 Three Chopt Rd	8975 Three Chopt Rd	8975 Three Chopt Rd
Total	10,264	81,383	100,307
0 - 4	5.3%	5.3%	6.4%
5 - 9	4.6%	4.8%	6.0%
10 - 14	5.2%	5.4%	6.8%
15 - 19	5.1%	7.3%	6.0%
20 - 24	8.3%	10.0%	5.9%
25 - 34	13.0%	13.7%	11.3%
35 - 44	14.6%	13.3%	15.5%
45 - 54	13.7%	14.2%	16.4%
55 - 64	12.1%	12.3%	12.8%
65 - 74	7.2%	6.0%	5.9%
75 - 84	7.1%	4.9%	4.3%
85+	3.8%	2.8%	2.7%

Median Age

	8975 Three Chopt Rd	8975 Three Chopt Rd	8975 Three Chopt Rd
2000	38.5	35.4	37.3
2007	40.5	36.8	39.1
2012	40.9	37.7	40.4

Source: U.S. Bureau of the Census, 2000 Census of Population and Housing. ESRI forecasts for 2007 and 2012.



Latitude: 37.607698
 Longitude: -77.561729

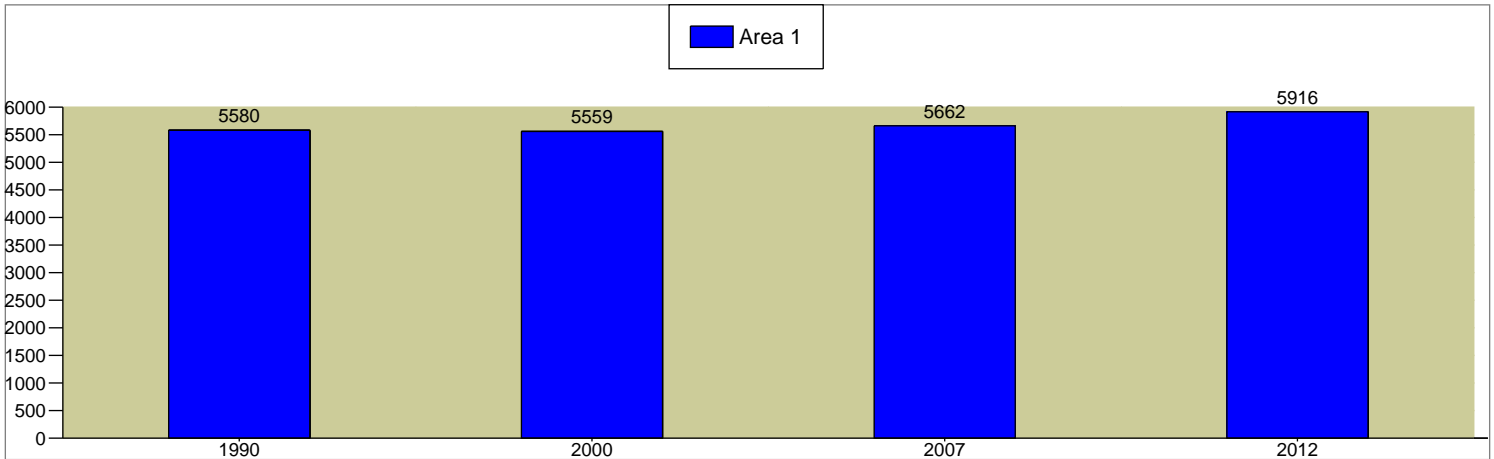
8975 Three Chopt Rd
 Richmond, VA 23229
 Donut: 0-1.0 mile

8975 Three Chopt Rd
 Richmond, VA 23229
 Donut: 1.0-3.0 mile

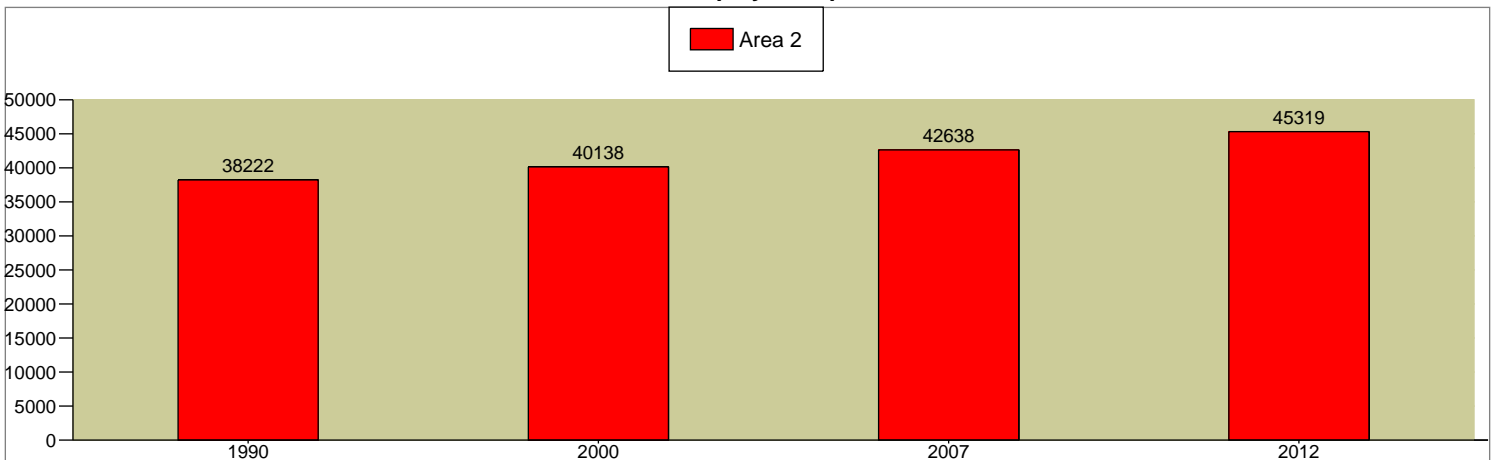
8975 Three Chopt Rd
 Richmond, VA 23229
 Donut: 3.0-5.0 mile

2000 - 2007 Civilian Employed Population 16+ Annual Rate	0.29%	0.97%	1.26%
2007 - 2012 Civilian Employed Population 16+ Annual Rate	0.88%	1.23%	1.3%

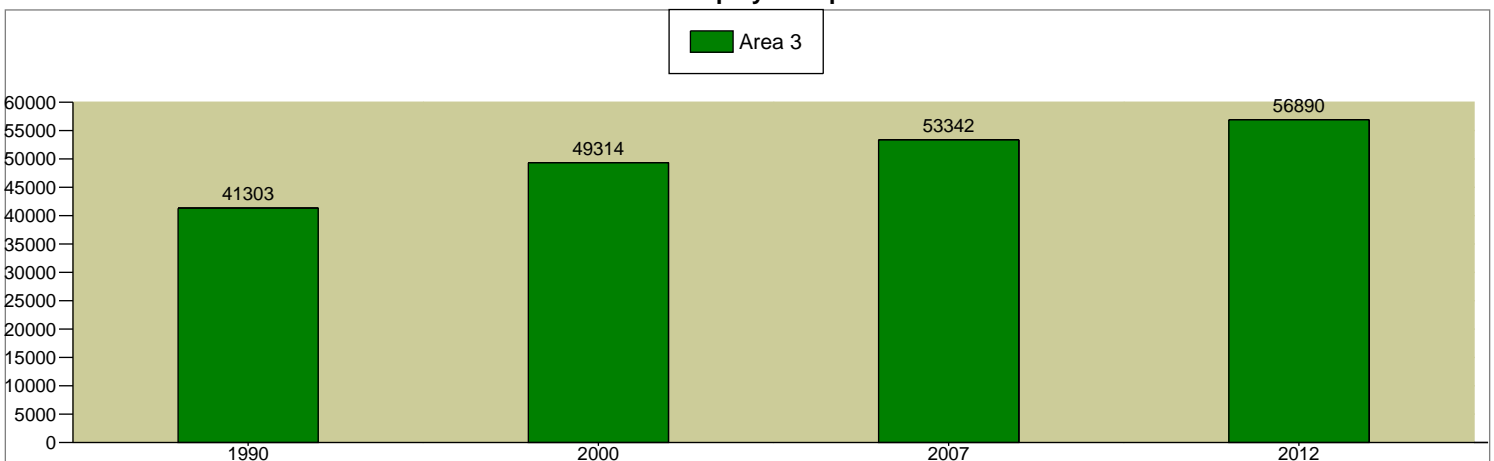
Total Civilian Employed Population 16+



Total Civilian Employed Population 16+



Total Civilian Employed Population 16+



Source: U.S. Bureau of the Census, 2000 Census of Population and Housing. ESRI converted 1990 Census data into 2000 geography. ESRI forecasts for 2007 and 2012.



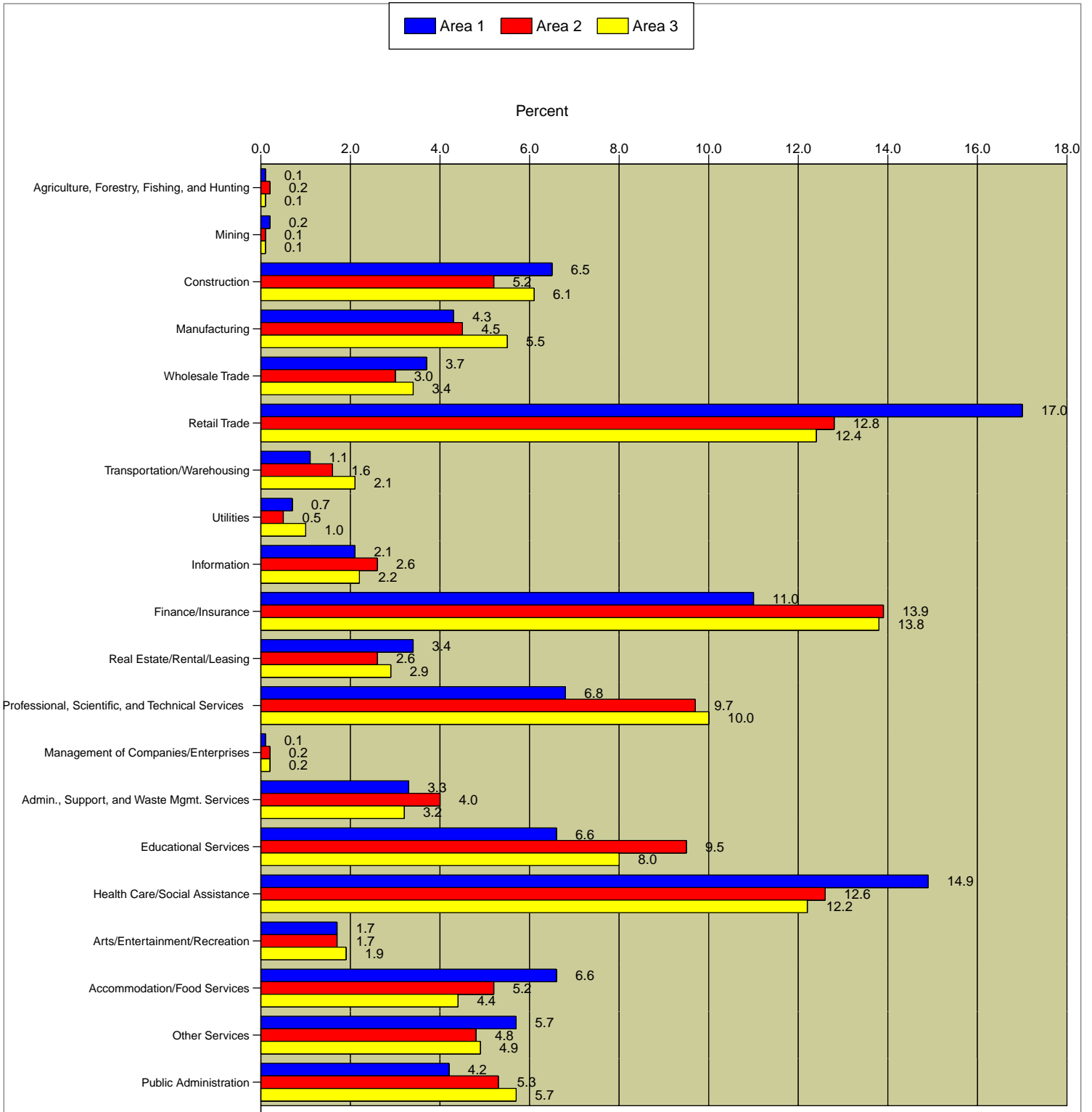
Latitude: 37.607698
Longitude: -77.561729

8975 Three Chopt Rd
Richmond, VA 23229
Donut: 0-1.0 mile

8975 Three Chopt Rd
Richmond, VA 23229
Donut: 1.0-3.0 mile

8975 Three Chopt Rd
Richmond, VA 23229
Donut: 3.0-5.0 mile

2007 Employed Civilian Population 16+ by Industry



Data Note: Industry descriptions based on 2000 Census of Population and Housing definitions.

Source: ESRI forecasts for 2007.



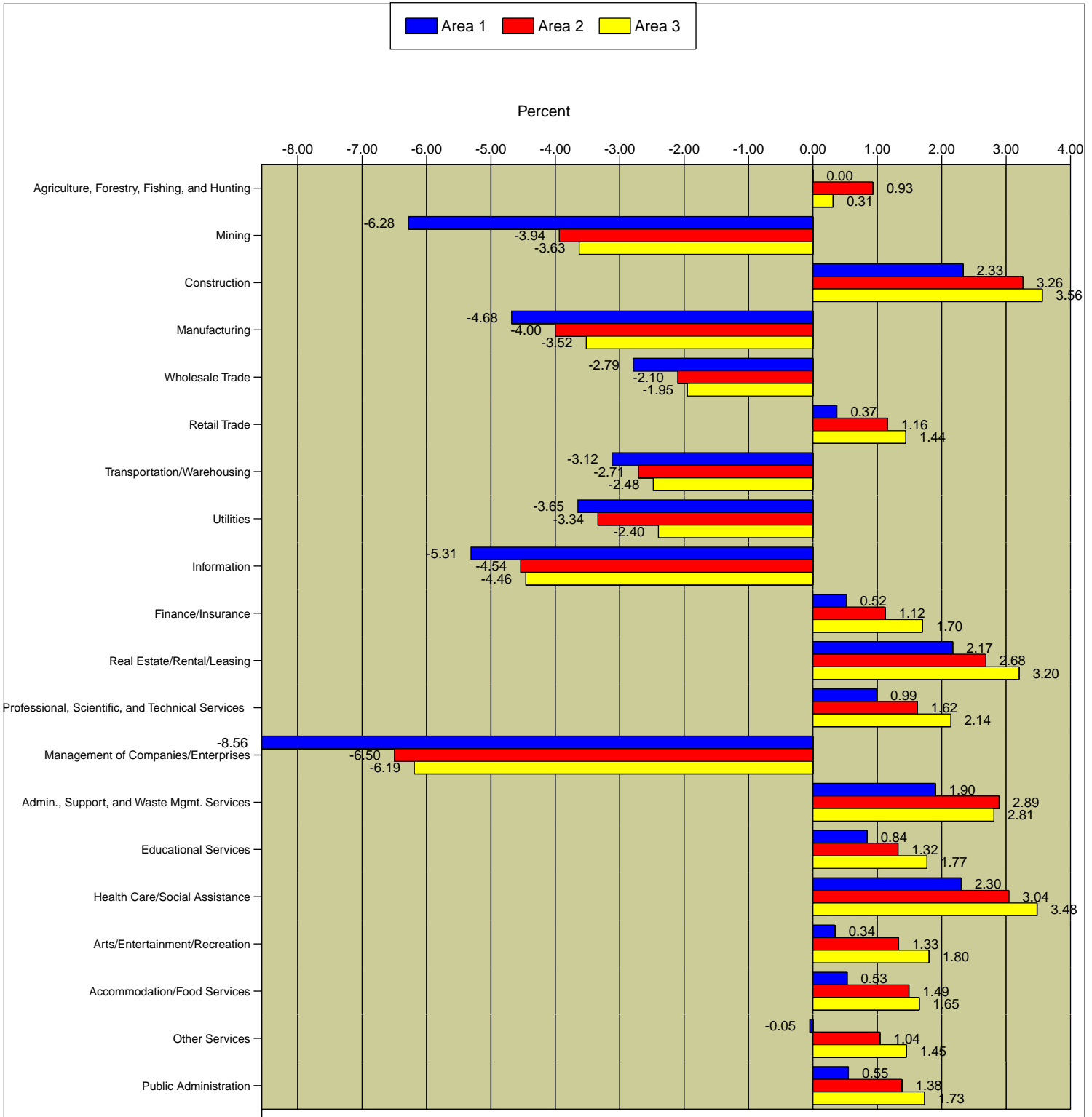
Latitude: 37.607698
 Longitude: -77.561729

8975 Three Chopt Rd
 Richmond, VA 23229
 Donut: 0-1.0 mile

8975 Three Chopt Rd
 Richmond, VA 23229
 Donut: 1.0-3.0 mile

8975 Three Chopt Rd
 Richmond, VA 23229
 Donut: 3.0-5.0 mile

2000 - 2007 Population by Industry Annual Rate



Data Note: Industry descriptions based on 2000 Census of Population and Housing definitions.

Source: ESRI forecasts for 2007.



Self Storage Express Pack

Prepared by Carol Campbell

Latitude: 37.607698
Longitude: -77.561729

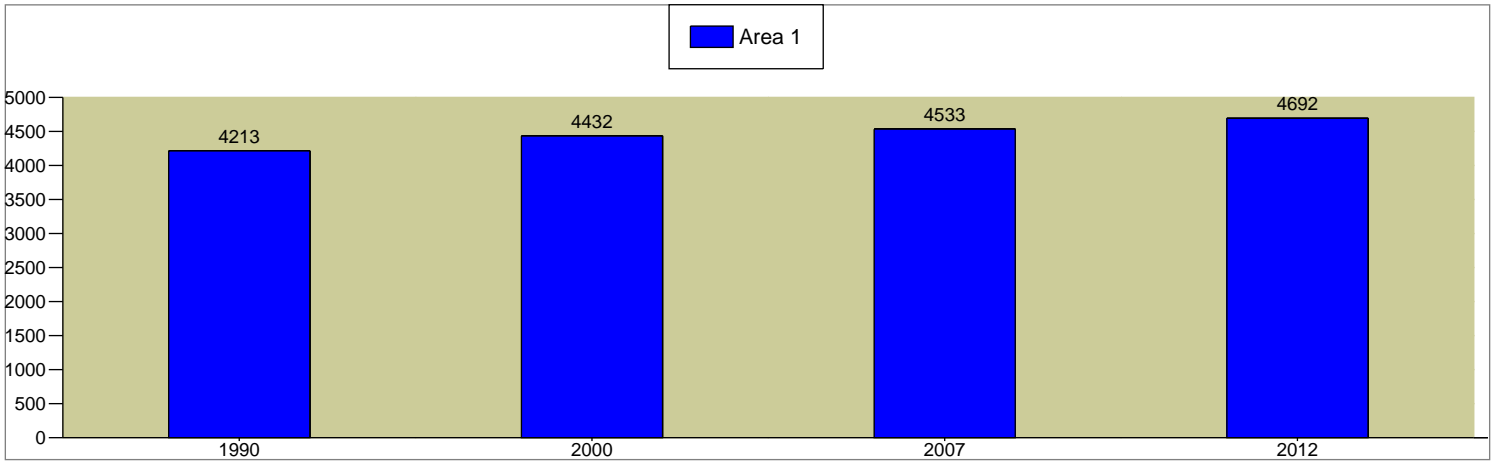
8975 Three Chopt Rd
Richmond, VA 23229
Donut: 0-1.0 mile

8975 Three Chopt Rd
Richmond, VA 23229
Donut: 1.0-3.0 mile

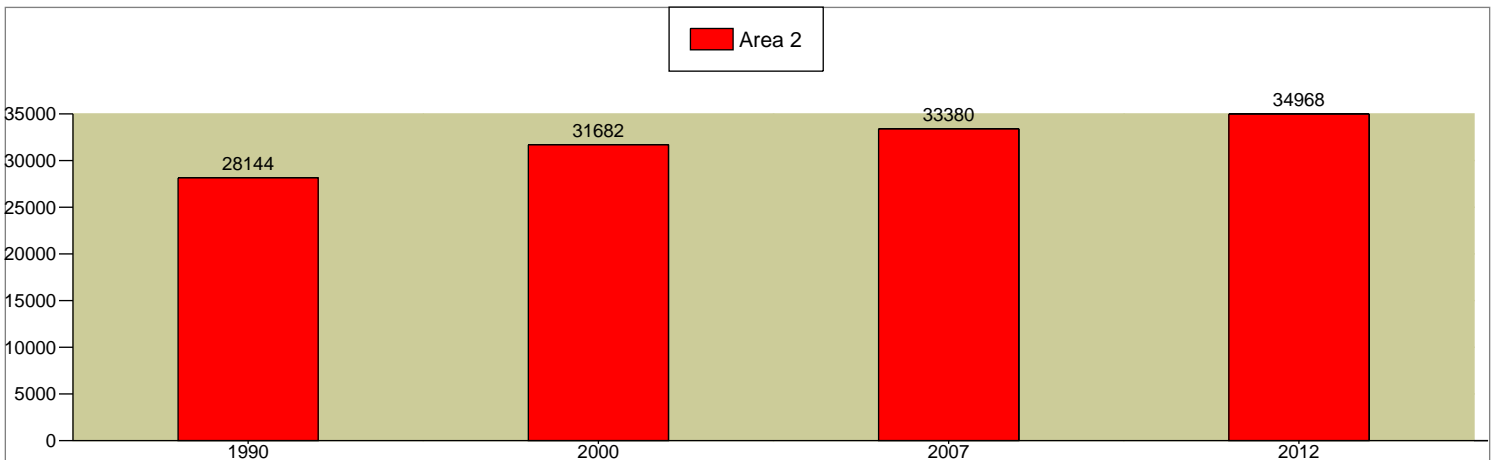
8975 Three Chopt Rd
Richmond, VA 23229
Donut: 3.0-5.0 mile

2000 - 2007 Households Annual Rate	0.36%	0.84%	0.87%
2007 - 2012 Households Annual Rate	0.69%	0.93%	0.88%

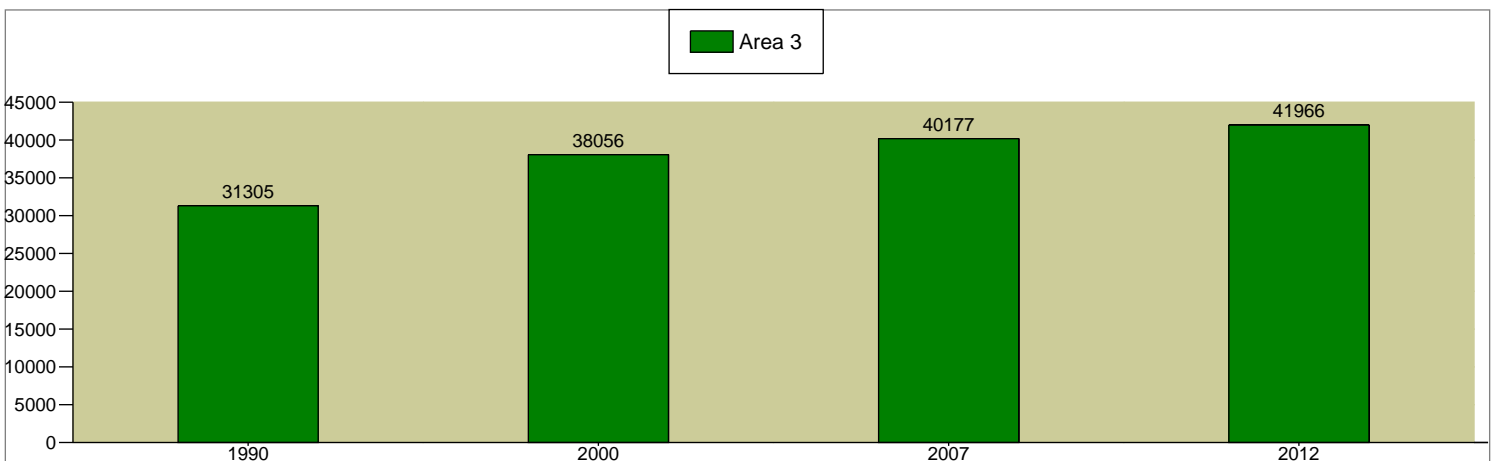
Total Households



Total Households



Total Households



Source: U.S. Bureau of the Census, 2000 Census of Population and Housing. ESRI converted 1990 Census data into 2000 geography. ESRI forecasts for 2007 and 2012.



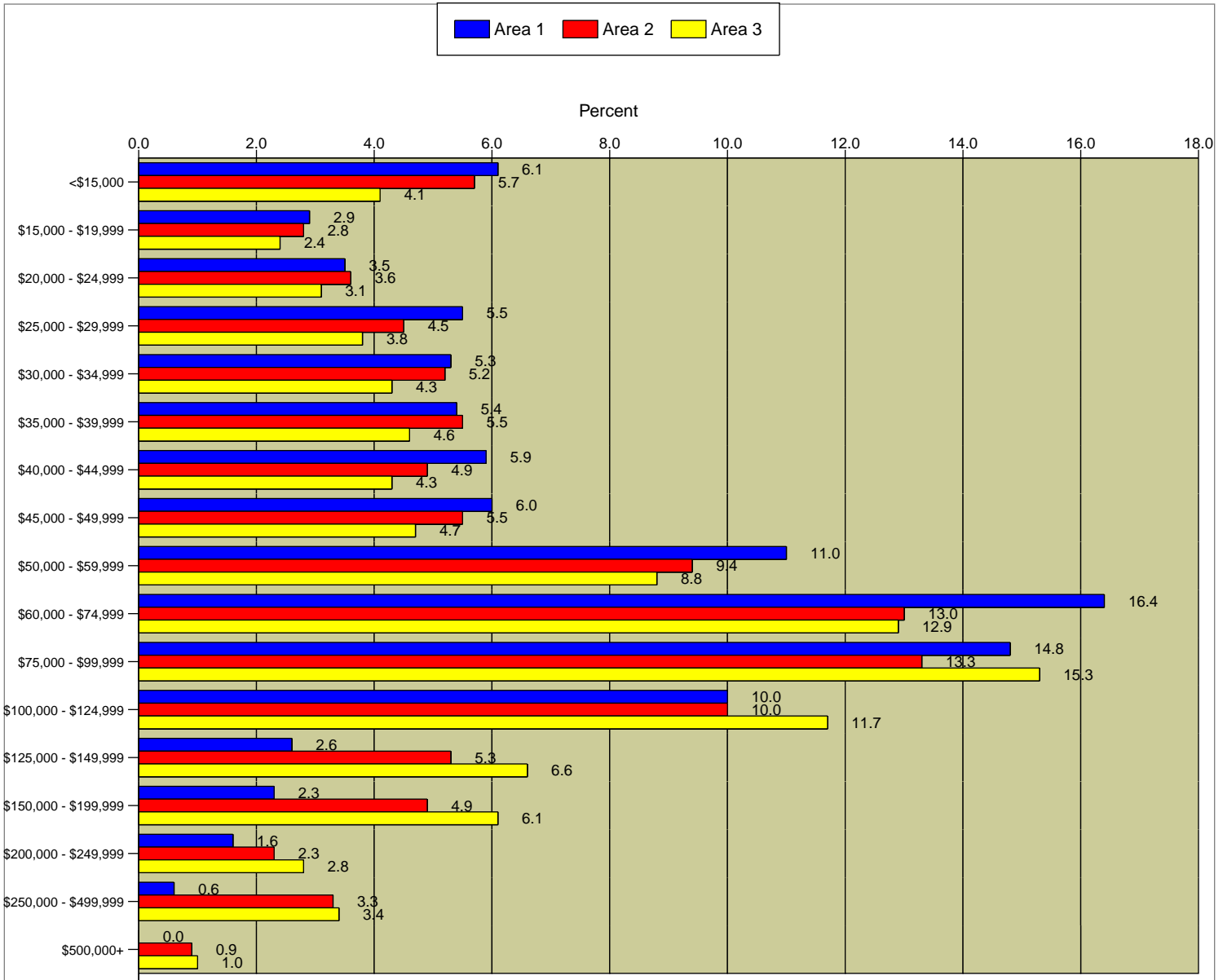
Latitude: 37.607698
Longitude: -77.561729

8975 Three Chopt Rd
Richmond, VA 23229
Donut: 0-1.0 mile

8975 Three Chopt Rd
Richmond, VA 23229
Donut: 1.0-3.0 mile

8975 Three Chopt Rd
Richmond, VA 23229
Donut: 3.0-5.0 mile

2007 Household Income



Median Household Income

Year	Area 1	Area 2	Area 3
2000	\$46,826	\$51,093	\$56,177
2007	\$58,364	\$62,841	\$70,734
2012	\$66,966	\$73,315	\$83,567

2000 - 2007 Median Household Income Annual Rate	3.59%	3.37%	3.76%
2007 - 2012 Median Household Income Annual Rate	2.79%	3.13%	3.39%

2007 Median Net Worth	\$122,286	\$140,134	\$174,693
-----------------------	-----------	-----------	-----------

Data Note: Detail may not sum to totals due to rounding. Income represents annual income for the preceding year. Income for 2007 and 2012 is expressed in current dollars, including an adjustment for inflation.

Source: U.S. Bureau of the Census, 2000 Census of Population and Housing. ESRI forecasts for 2007 and 2012.



Self Storage Express Pack

Prepared by Carol Campbell

Latitude: 37.607698
Longitude: -77.561729

8975 Three Chopt Rd
Richmond, VA 23229
Donut: 0-1.0 mile

8975 Three Chopt Rd
Richmond, VA 23229
Donut: 1.0-3.0 mile

8975 Three Chopt Rd
Richmond, VA 23229
Donut: 3.0-5.0 mile

2000 Households by Type

	8975 Three Chopt Rd	8975 Three Chopt Rd	8975 Three Chopt Rd
Total	4,432	31,682	38,056
Family Households	60.0%	58.8%	63.0%
Married-couple Family	46.7%	47.2%	51.8%
With Related Children	18.7%	21.2%	25.1%
Other Family (No Spouse)	13.4%	11.5%	11.2%
With Related Children	8.1%	7.0%	6.8%
Nonfamily Households	40.0%	41.2%	37.0%
Householder Living Alone	31.9%	33.1%	30.5%
Householder Not Living Alone	8.1%	8.1%	6.6%

2000 Housing Units

	8975 Three Chopt Rd	8975 Three Chopt Rd	8975 Three Chopt Rd
Owner Occupied Housing Units	58.4%	55.5%	71.1%
Renter Occupied Housing Units	38.9%	40.3%	25.5%
Vacant Housing Units	2.7%	4.2%	3.4%

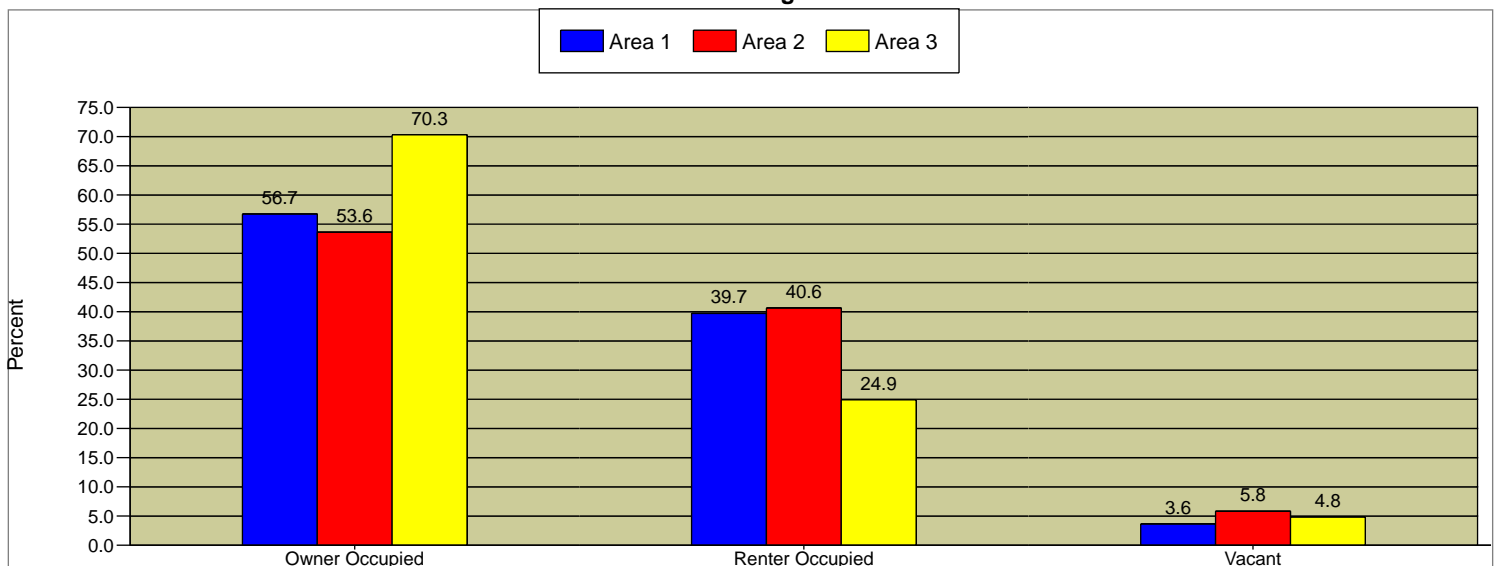
2007 Housing Units

	8975 Three Chopt Rd	8975 Three Chopt Rd	8975 Three Chopt Rd
Owner Occupied Housing Units	56.7%	53.6%	70.3%
Renter Occupied Housing Units	39.7%	40.6%	24.9%
Vacant Housing Units	3.6%	5.8%	4.8%

2012 Housing Units

	8975 Three Chopt Rd	8975 Three Chopt Rd	8975 Three Chopt Rd
Owner Occupied Housing Units	55.8%	52.4%	69.6%
Renter Occupied Housing Units	40.0%	40.9%	24.8%
Vacant Housing Units	4.2%	6.7%	5.6%

2007 Housing Units



Median Home Value

	8975 Three Chopt Rd	8975 Three Chopt Rd	8975 Three Chopt Rd
2000	\$117,244	\$142,123	\$137,349
2007	\$210,687	\$252,674	\$246,080
2012	\$248,544	\$294,900	\$293,126

Data Note: Detail may not sum to totals due to rounding.

Source: U.S. Bureau of the Census, 2000 Census of Population and Housing. ESRI forecasts for 2007 and 2012.