



5956 Sherry Lane, Dallas, Texas, 75225

Latitude: 32.862257

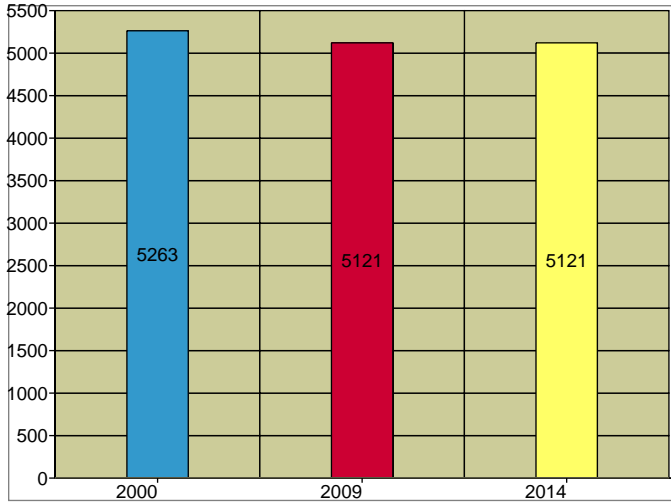
32.862257, -96.809906

Site Type: Ring

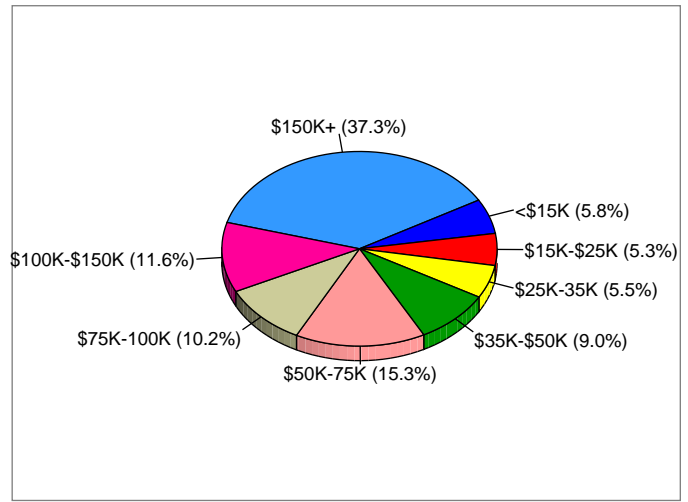
Longitude: -96.809906

Radius: 1 miles

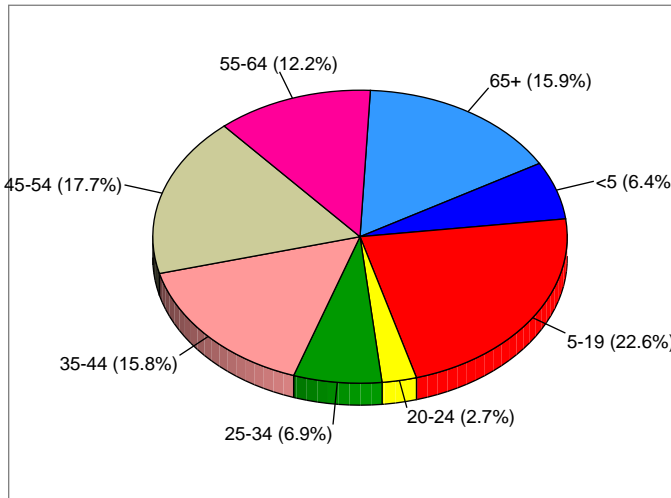
**Households**



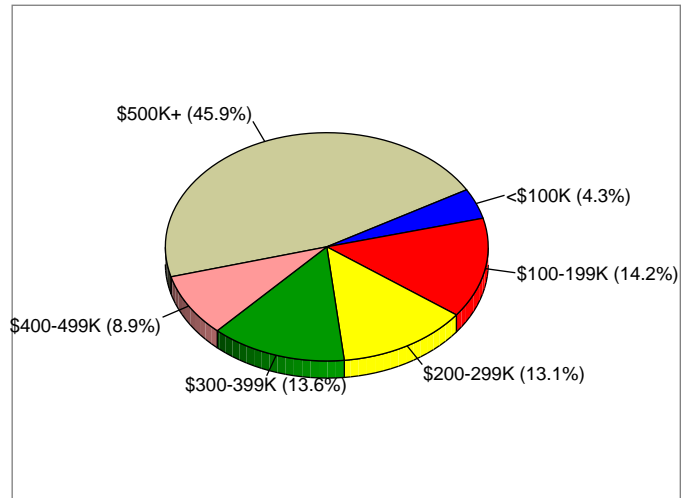
**2009 Households by Income**



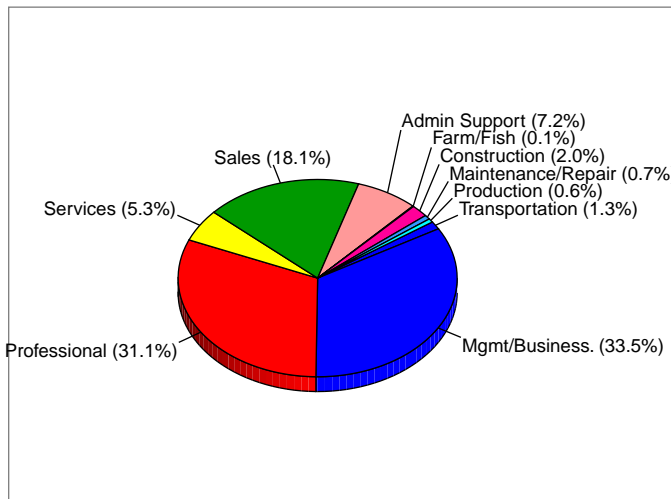
**2009 Population by Age**



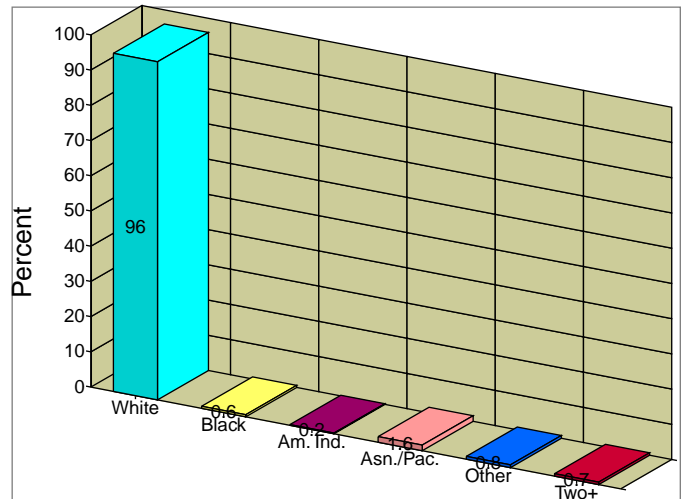
**2009 Owner Occupied HUs by Value**



**2009 Employed 16+ by Occupation**



**2009 Population by Race**



2009 Percent Hispanic Origin: 4.3%

Source: U.S. Bureau of the Census, 2000 Census of Population and Housing. ESRI forecasts for 2009 and 2014.



5956 Sherry Lane, Dallas, Texas, 75225

Latitude: 32.862257

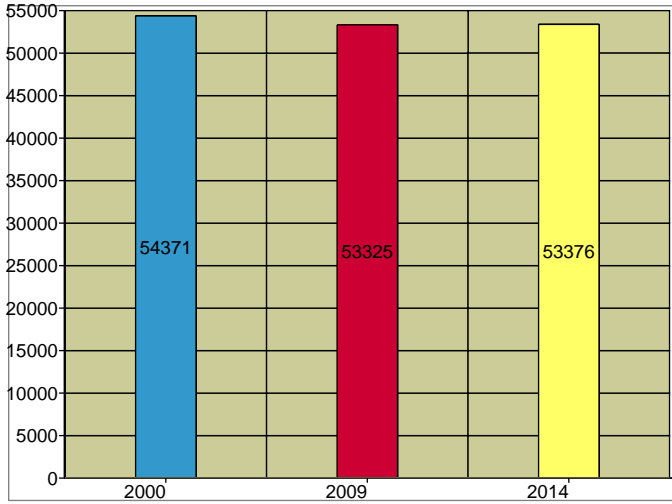
32.862257, -96.809906

Site Type: Ring

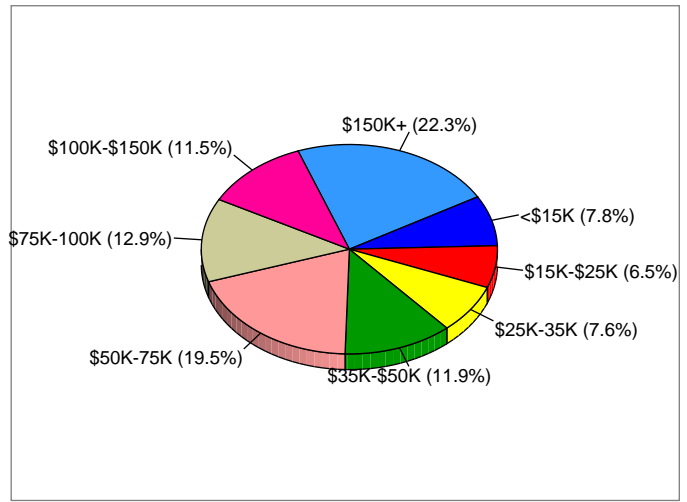
Longitude: -96.809906

Radius: 3 miles

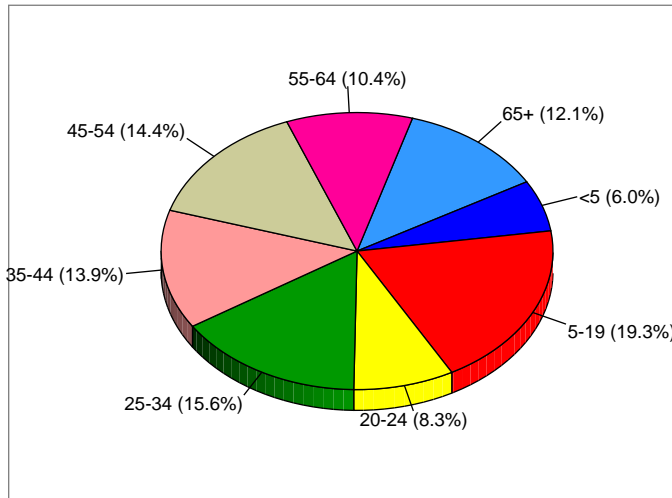
**Households**



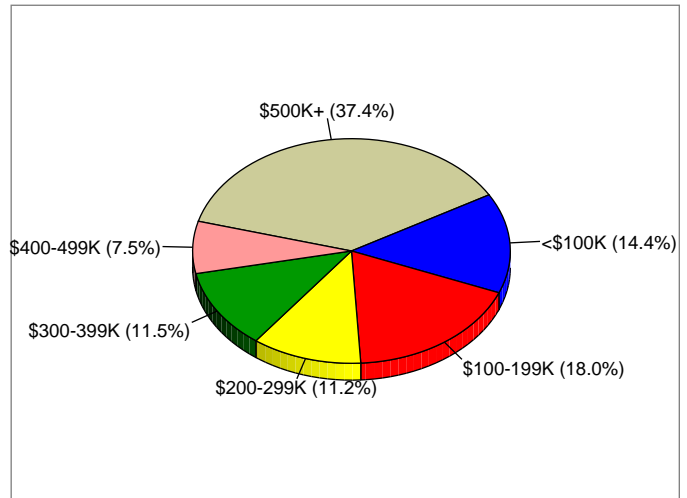
**2009 Households by Income**



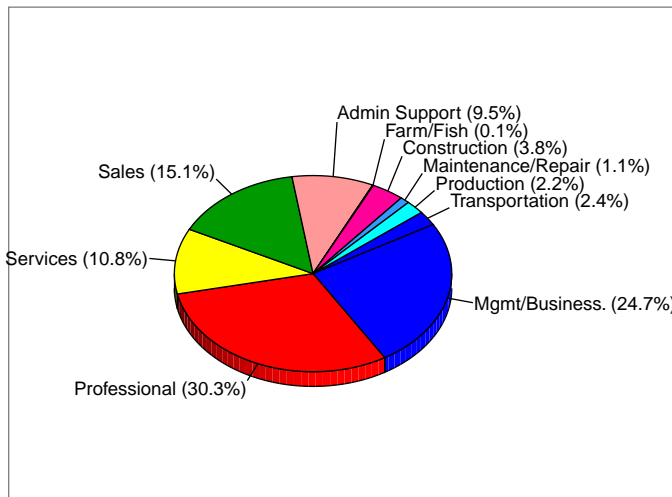
**2009 Population by Age**



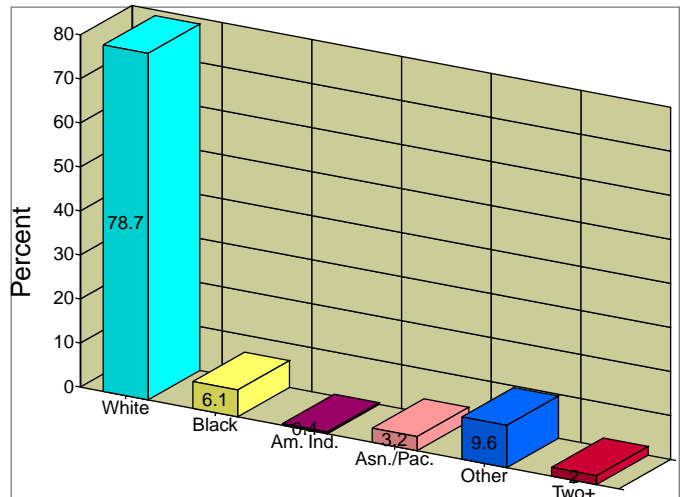
**2009 Owner Occupied HUs by Value**



**2009 Employed 16+ by Occupation**



**2009 Population by Race**



2009 Percent Hispanic Origin: 23.9%

Source: U.S. Bureau of the Census, 2000 Census of Population and Housing. ESRI forecasts for 2009 and 2014.



5956 Sherry Lane, Dallas, Texas, 75225

Latitude: 32.862257

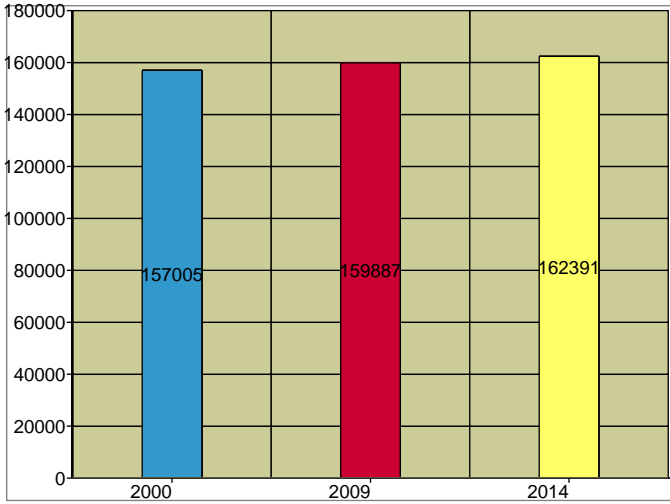
32.862257, -96.809906

Site Type: Ring

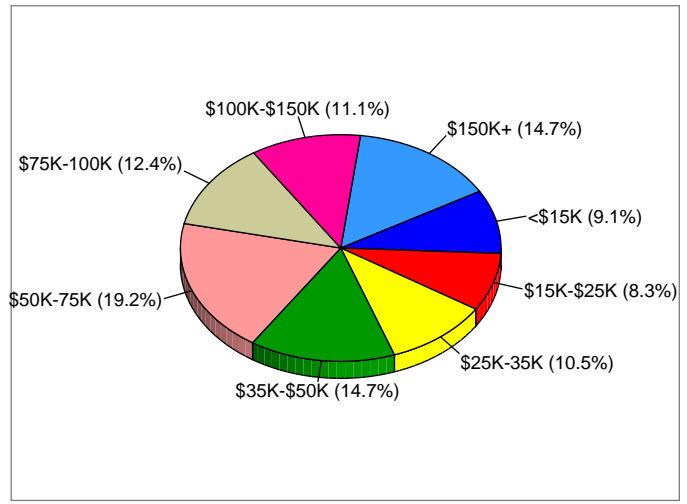
Longitude: -96.809906

Radius: 5 miles

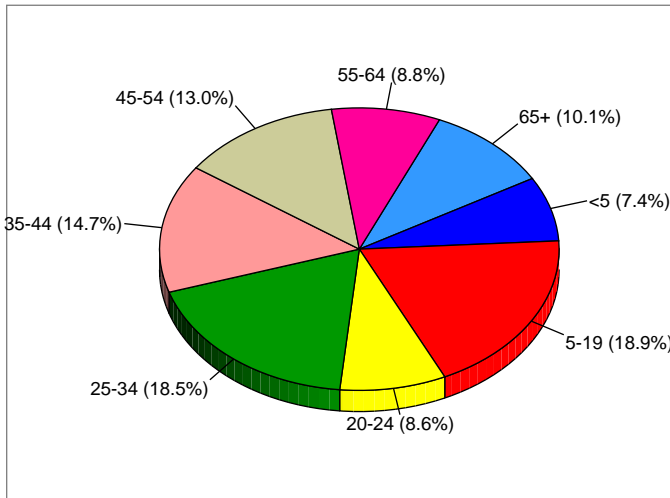
**Households**



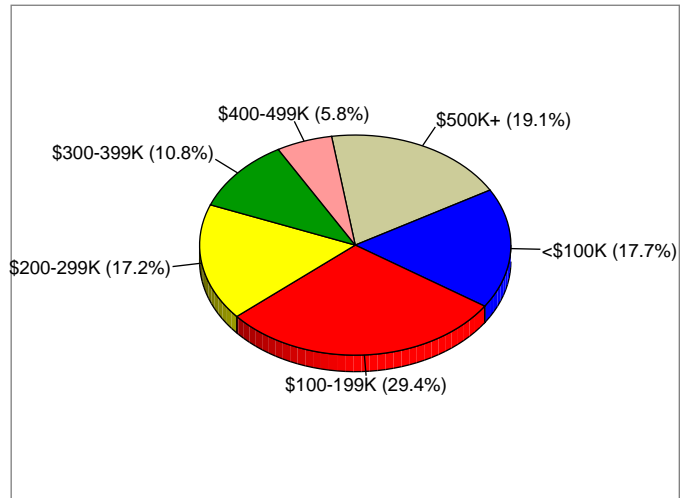
**2009 Households by Income**



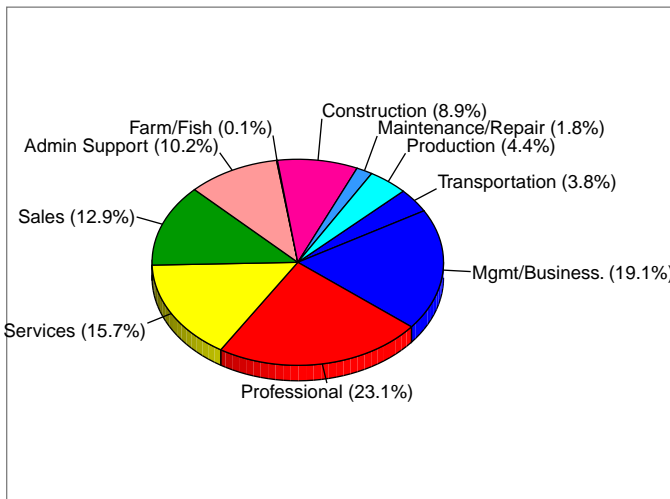
**2009 Population by Age**



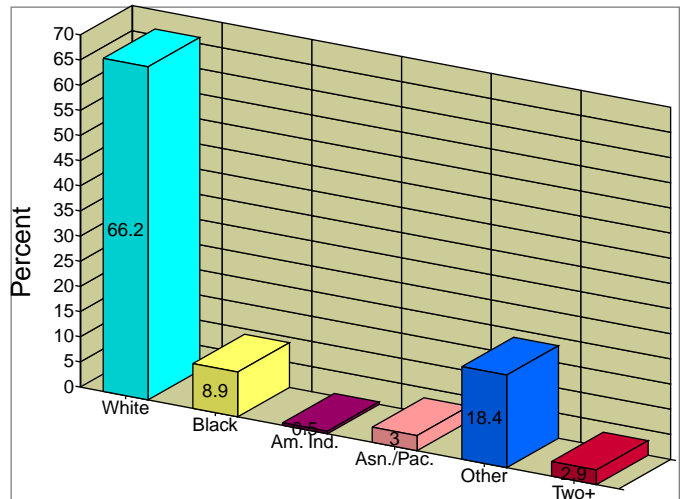
**2009 Owner Occupied HUs by Value**



**2009 Employed 16+ by Occupation**



**2009 Population by Race**



2009 Percent Hispanic Origin: 41.8%

Source: U.S. Bureau of the Census, 2000 Census of Population and Housing. ESRI forecasts for 2009 and 2014.