



5956 Sherry Lane, Dallas, Texas, 75225

Latitude: 32.862257

32.862257, -96.809906

32.862257, -96.809906

32.862257, -96.809906

Longitude: -96.809906

Radius: 1 Miles

Radius: 3 Miles

Radius: 5 Miles

2000 - 2009 Population Annual Rate

0.01%

0.16%

0.57%

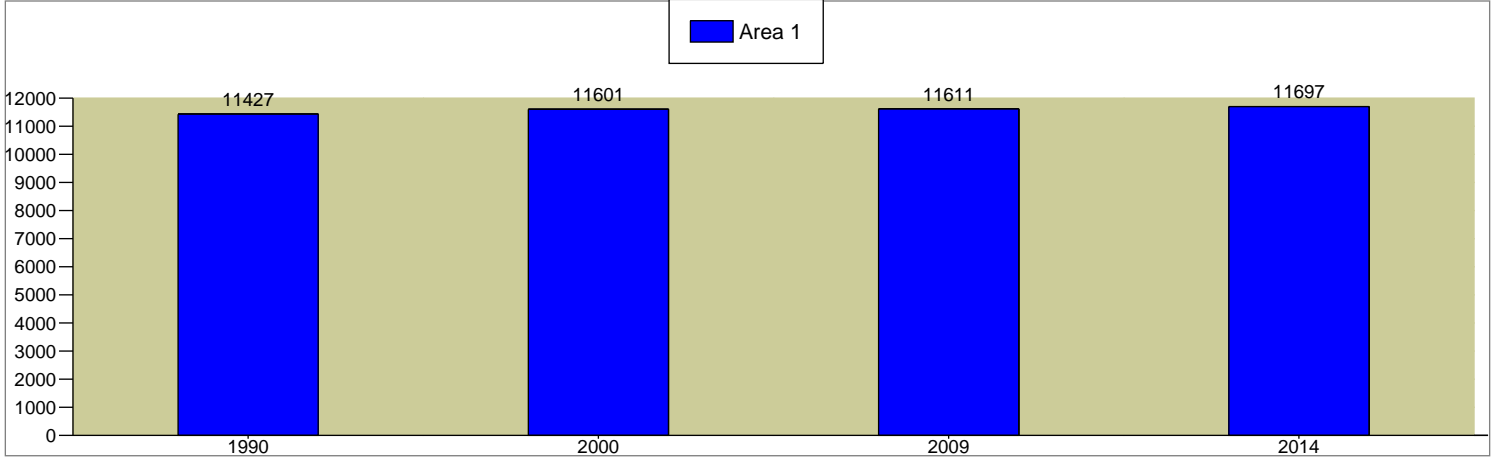
2009 - 2014 Population Annual Rate

0.15%

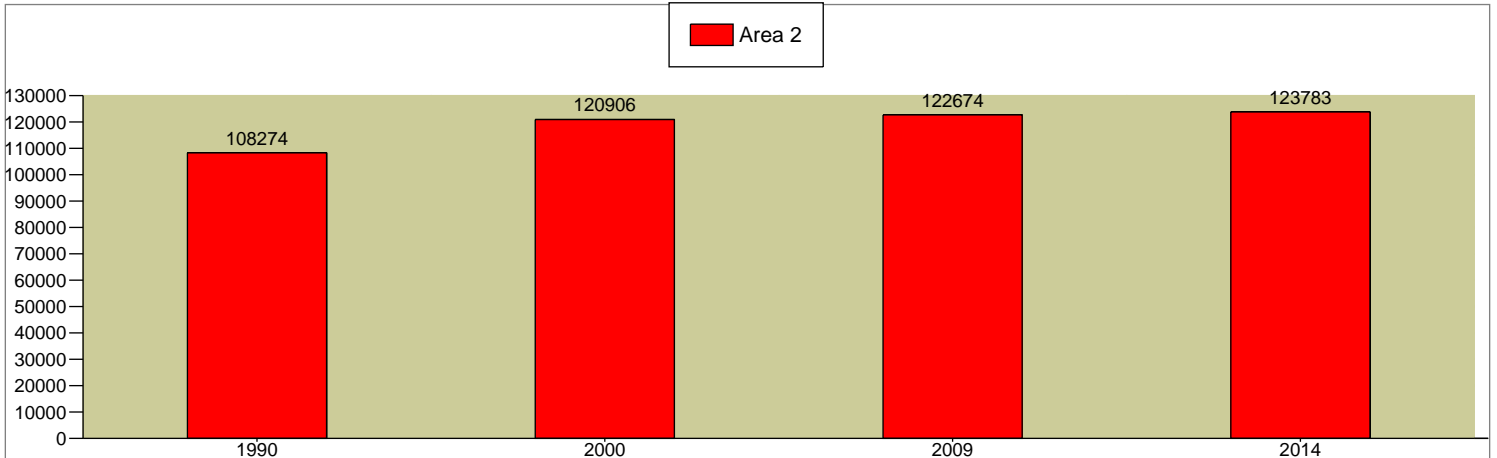
0.18%

0.39%

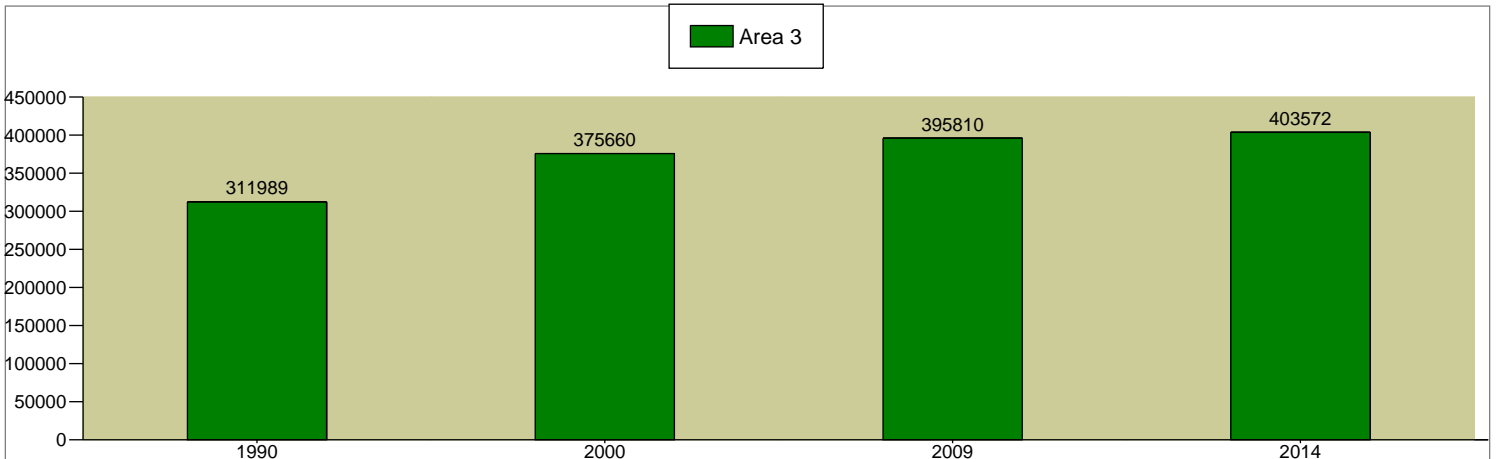
Total Population



Total Population



Total Population



Source: U.S. Bureau of the Census, 2000 Census of Population and Housing. ESRI converted 1990 Census data into 2000 geography. ESRI forecasts for 2009 and 2014.



5956 Sherry Lane, Dallas, Texas, 75225

Latitude: 32.862257	32.862257, -96.809906	32.862257, -96.809906	32.862257, -96.809906
Longitude: -96.809906	Radius: 1 Miles	Radius: 3 Miles	Radius: 5 Miles

### 2000 Population by Sex

Males	46.0%	49.5%	52.1%
Females	54.0%	50.5%	47.9%

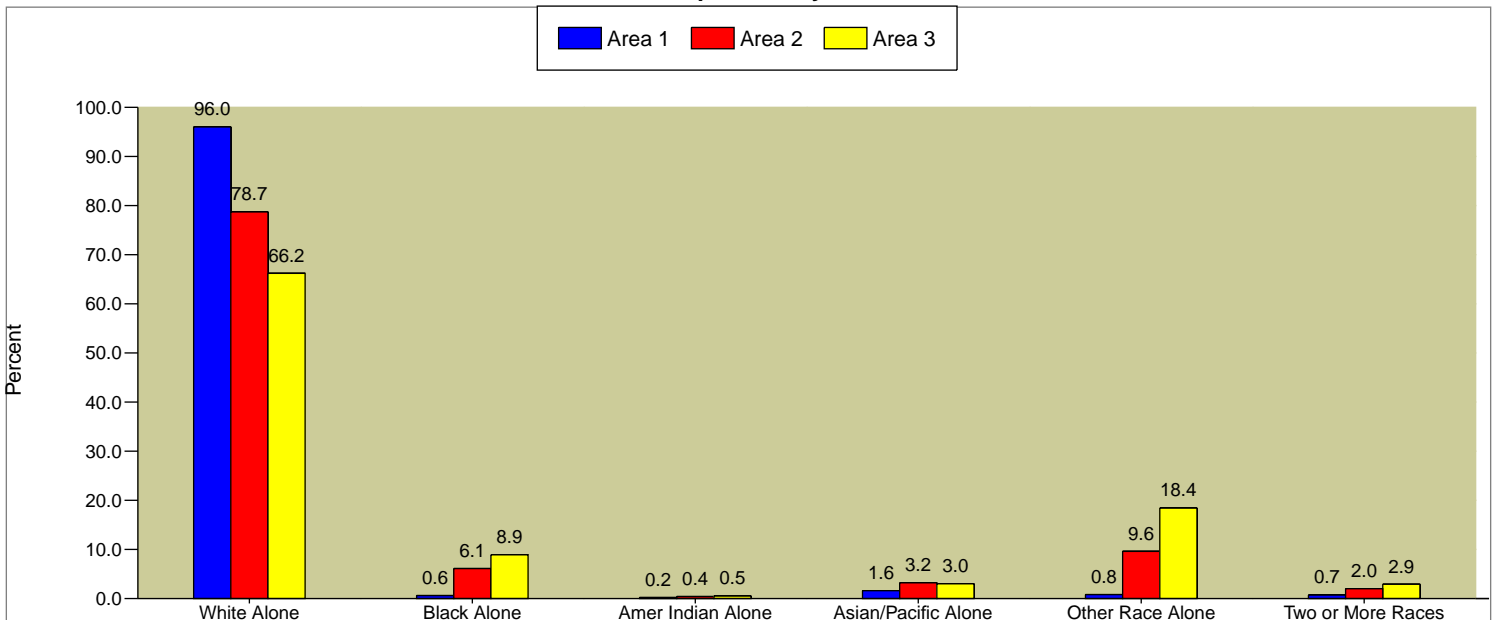
### 2009 Population by Sex

Males	46.6%	49.9%	52.1%
Females	53.4%	50.1%	47.9%

### 2014 Population by Sex

Males	47.0%	50.0%	52.1%
Females	53.0%	50.0%	47.9%

2009 Population by Race



2009 Hispanic Origin	4.3%	23.9%	41.8%
----------------------	------	-------	-------

### 2009 Population 15+ by Marital Status

Total	8,981	100,205	316,431
Never Married	21.8%	38.1%	39.2%
Married	59.5%	45.9%	45.8%
Widowed	8.4%	6.0%	5.0%
Divorced	10.2%	10.0%	10.0%

### 2009 Population 25+ by Educational Attainment

Total	7,938	81,526	257,447
Less than 9th Grade	1.0%	6.6%	14.8%
9th - 12th Grade, No Diploma	1.8%	5.8%	9.9%
High School Graduate	7.5%	10.8%	14.2%
Some College, No Degree	11.2%	15.4%	15.2%
Associate Degree	2.7%	3.6%	4.0%
Bachelor's Degree	47.7%	35.1%	26.0%
Graduate/Professional Degree	28.2%	22.7%	15.8%

Data Note: Persons of Hispanic Origin may be of any race

Source: U.S. Bureau of the Census, 2000 Census of Population and Housing. ESRI forecasts for 2009 and 2014.



5956 Sherry Lane, Dallas, Texas, 75225

Latitude: 32.862257

32.862257, -96.809906

32.862257, -96.809906

32.862257, -96.809906

Longitude: -96.809906

Radius: 1 Miles

Radius: 3 Miles

Radius: 5 Miles

## 2000 Population by Age

	Radius: 1 Miles	Radius: 3 Miles	Radius: 5 Miles
<b>Total</b>	11,603	120,907	375,661
0 - 4	7.1%	6.4%	7.7%
5 - 9	7.7%	6.0%	6.4%
10 - 14	6.9%	5.5%	5.3%
15 - 19	4.9%	6.0%	6.0%
20 - 24	1.7%	8.2%	9.2%
25 - 34	12.8%	18.8%	21.5%
35 - 44	18.4%	16.1%	15.9%
45 - 54	15.4%	12.8%	11.3%
55 - 64	9.4%	7.7%	6.5%
65 - 74	6.4%	5.5%	4.7%
75 - 84	6.4%	4.8%	3.8%
85+	2.9%	2.0%	1.6%

## 2009 Population by Age

	Radius: 1 Miles	Radius: 3 Miles	Radius: 5 Miles
<b>Total</b>	11,609	122,676	395,811
0 - 4	6.4%	6.0%	7.4%
5 - 9	7.7%	6.0%	6.6%
10 - 14	8.6%	6.3%	6.0%
15 - 19	6.3%	7.0%	6.3%
20 - 24	2.7%	8.3%	8.6%
25 - 34	6.9%	15.6%	18.5%
35 - 44	15.8%	13.9%	14.7%
45 - 54	17.7%	14.4%	13.0%
55 - 64	12.2%	10.4%	8.8%
65 - 74	6.7%	5.5%	4.6%
75 - 84	5.4%	4.1%	3.4%
85+	3.8%	2.5%	2.0%

## 2014 Population by Age

	Radius: 1 Miles	Radius: 3 Miles	Radius: 5 Miles
<b>Total</b>	11,696	123,782	403,574
0 - 4	5.9%	5.7%	7.3%
5 - 9	7.3%	5.8%	6.5%
10 - 14	7.9%	6.0%	5.9%
15 - 19	6.7%	7.0%	6.2%
20 - 24	3.2%	8.8%	9.1%
25 - 34	7.9%	15.8%	18.4%
35 - 44	11.0%	11.6%	12.9%
45 - 54	18.3%	14.2%	12.8%
55 - 64	13.9%	11.6%	9.8%
65 - 74	8.6%	7.1%	5.8%
75 - 84	5.3%	4.0%	3.3%
85+	3.8%	2.5%	2.0%

## Median Age

Year	Radius: 1 Miles	Radius: 3 Miles	Radius: 5 Miles
2000	40.0	34.4	31.9
2009	42.7	35.6	32.9
2014	45.0	35.9	32.9

Source: U.S. Bureau of the Census, 2000 Census of Population and Housing. ESRI forecasts for 2009 and 2014.

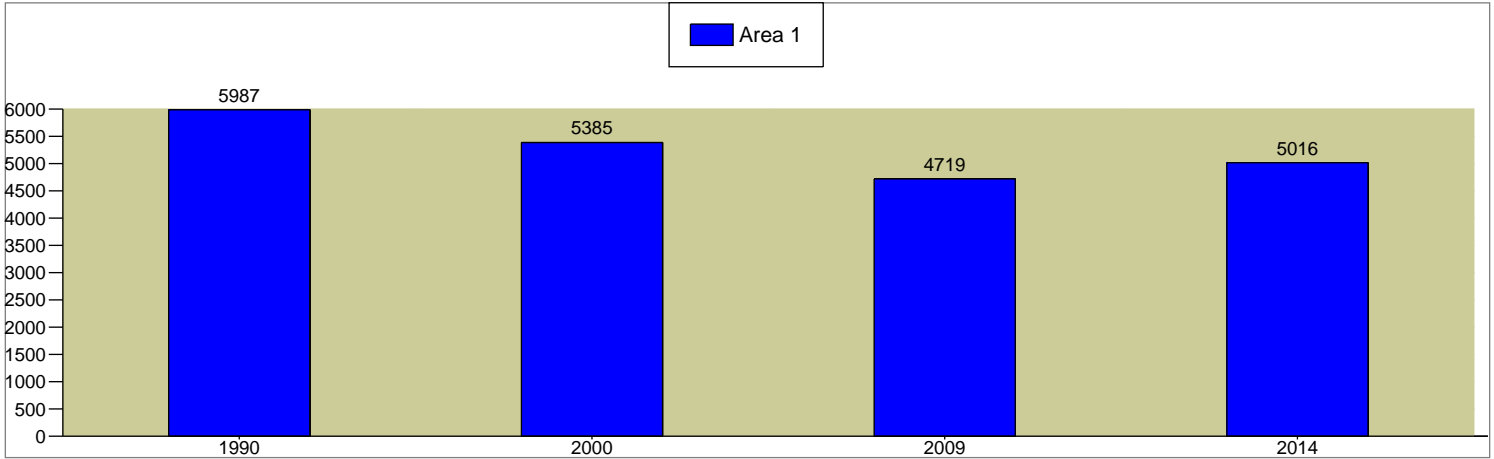


5956 Sherry Lane, Dallas, Texas, 75225

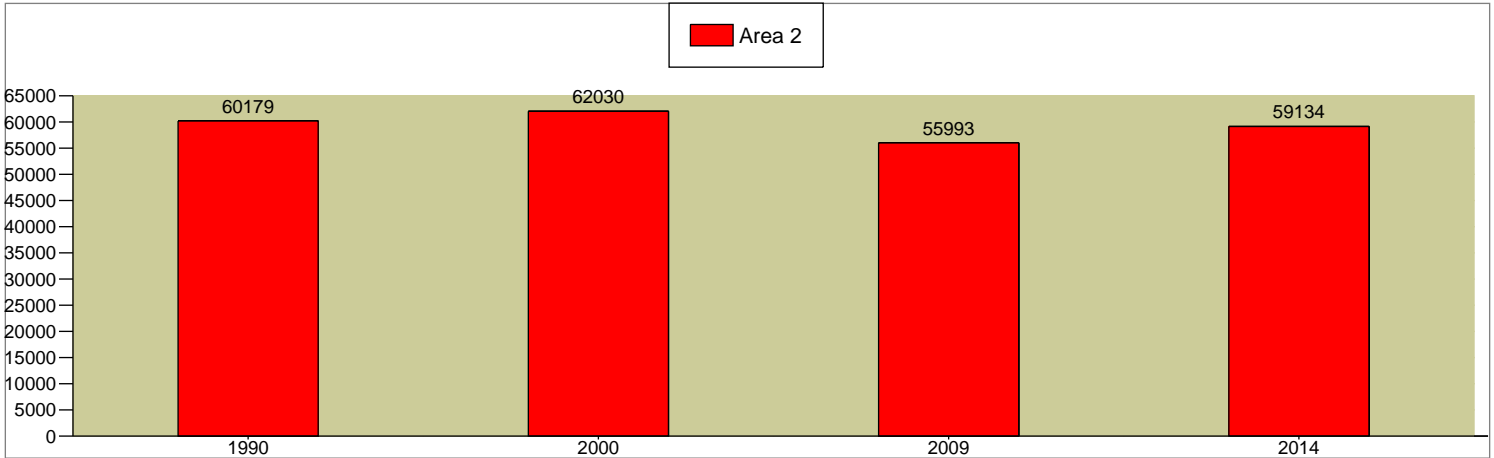
Latitude: 32.862257	32.862257, -96.809906	32.862257, -96.809906	32.862257, -96.809906
Longitude: -96.809906	Radius: 1 Miles	Radius: 3 Miles	Radius: 5 Miles

2000 - 2009 Civilian Employed Population 16+ Annual Rate	-1.42%	-1.1%	-0.7%
2009 - 2014 Civilian Employed Population 16+ Annual Rate	1.23%	1.1%	1.2%

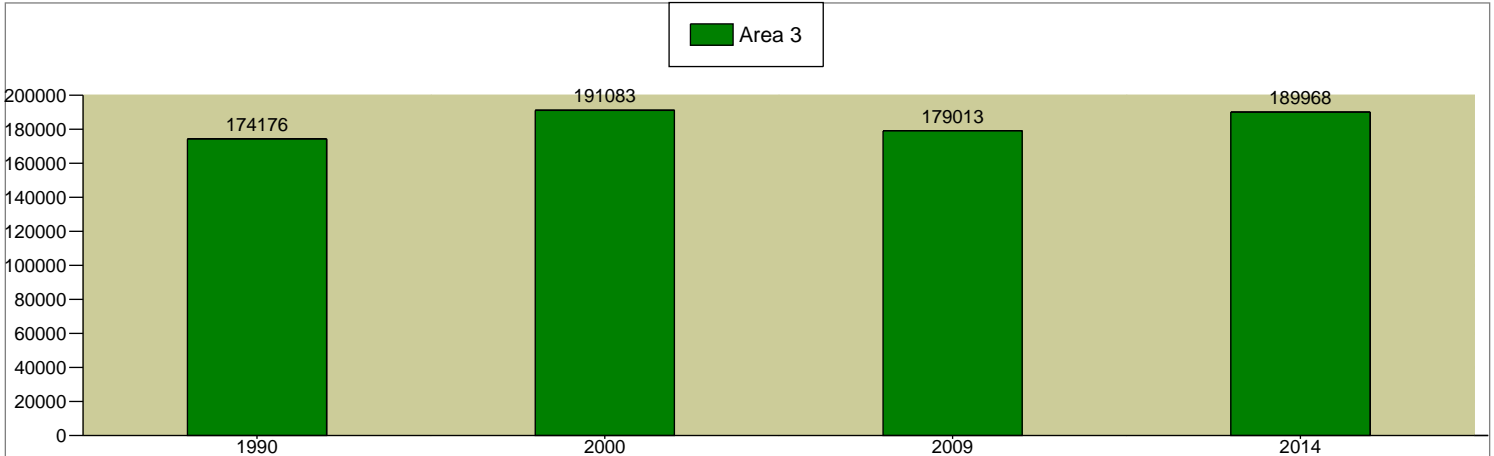
Total Civilian Employed Population 16+



Total Civilian Employed Population 16+



Total Civilian Employed Population 16+



Source: U.S. Bureau of the Census, 2000 Census of Population and Housing. ESRI converted 1990 Census data into 2000 geography. ESRI forecasts for 2009 and 2014.



5956 Sherry Lane, Dallas, Texas, 75225

Latitude: 32.862257

32.862257, -96.809906

32.862257, -96.809906

32.862257, -96.809906

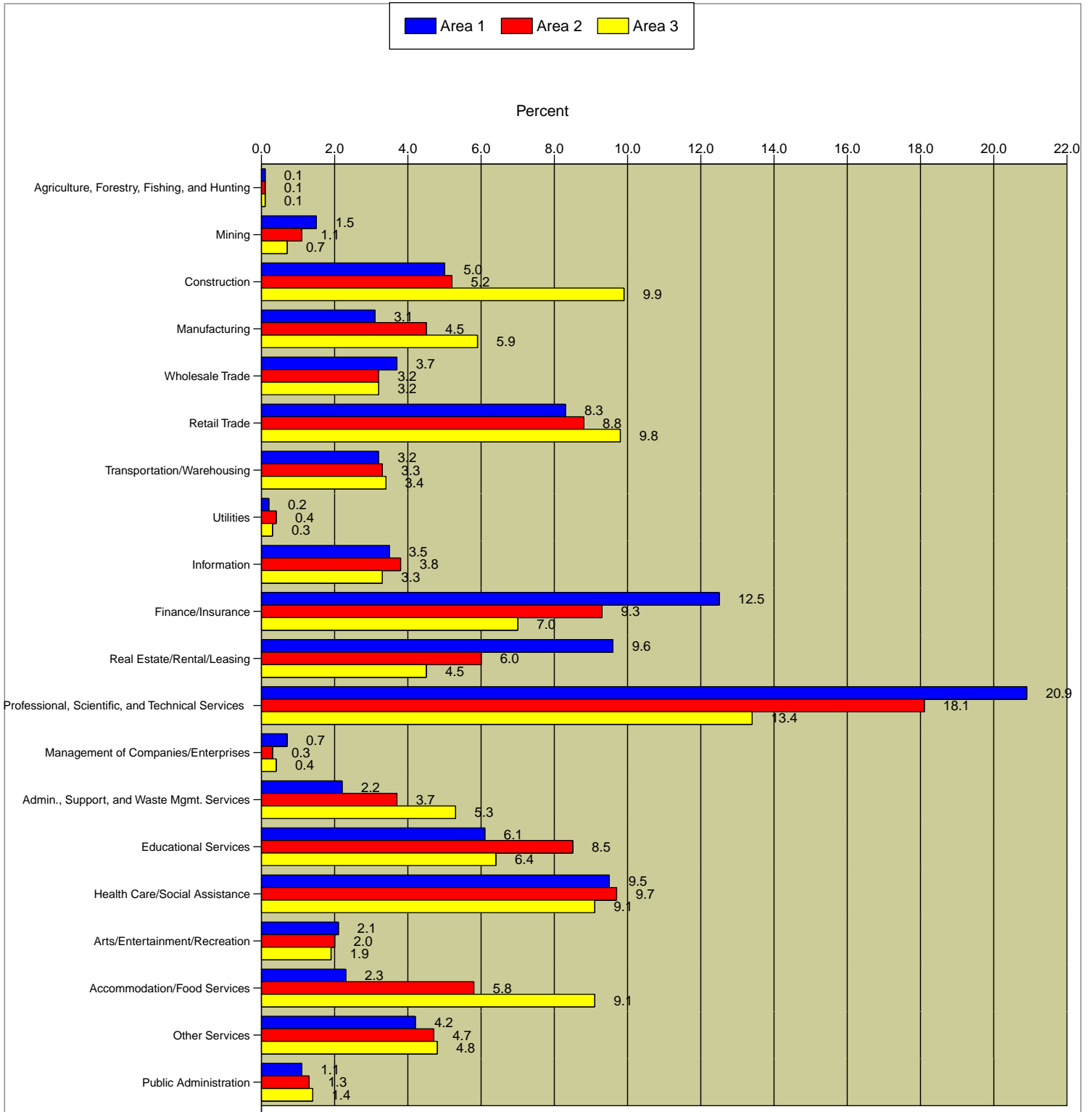
Longitude: -96.809906

Radius: 1 Miles

Radius: 3 Miles

Radius: 5 Miles

2009 Employed Civilian Population 16+ by Industry



Data Note: Industry descriptions based on 2000 Census of Population and Housing definitions.

Source: ESRI forecasts for 2009.



5956 Sherry Lane, Dallas, Texas, 75225

Latitude: 32.862257

32.862257, -96.809906

32.862257, -96.809906

32.862257, -96.809906

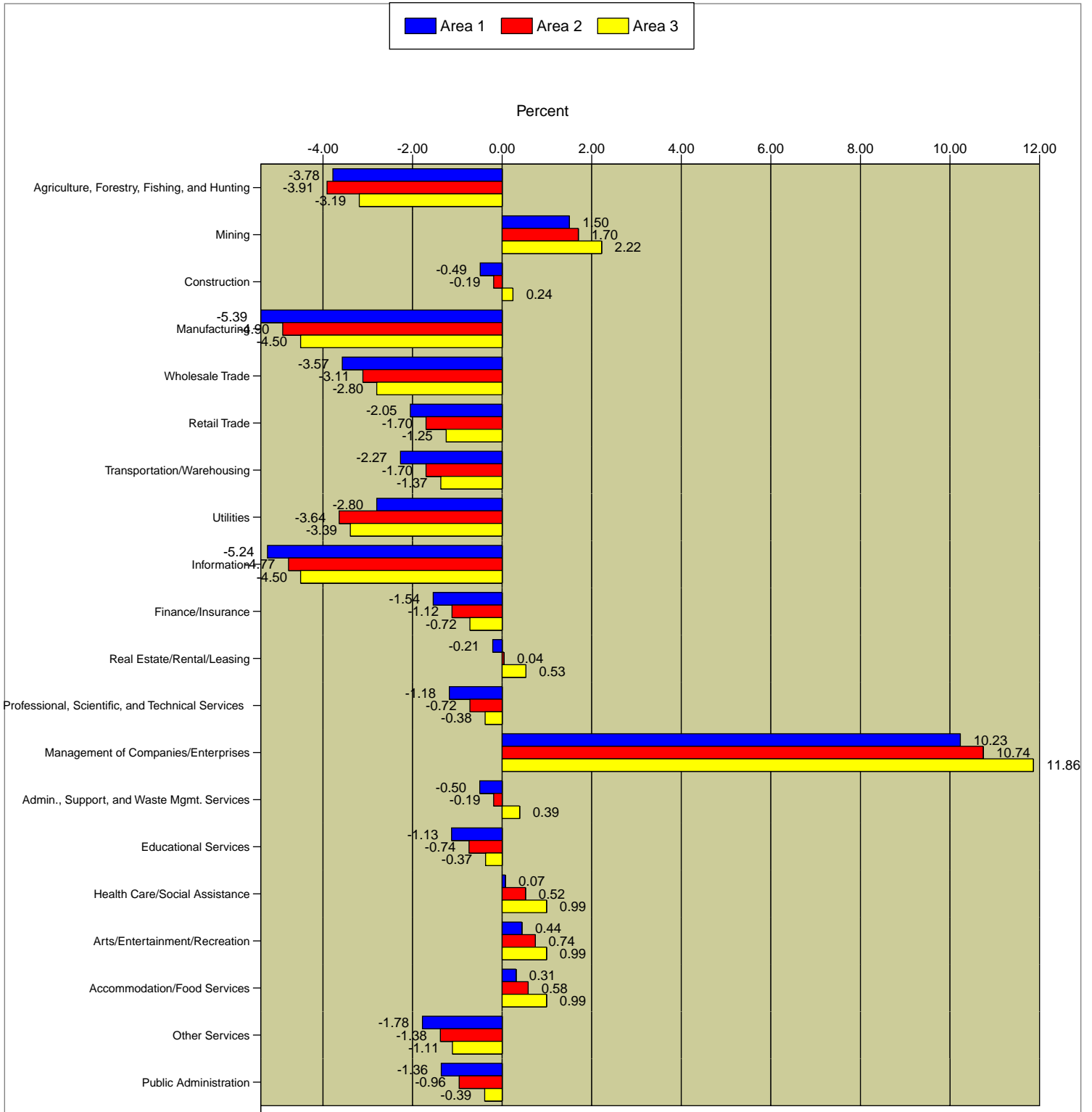
Longitude: -96.809906

Radius: 1 Miles

Radius: 3 Miles

Radius: 5 Miles

## 2000 - 2009 Population by Industry Annual Rate



Data Note: Industry descriptions based on 2000 Census of Population and Housing definitions.

Source: ESRI forecasts for 2009.

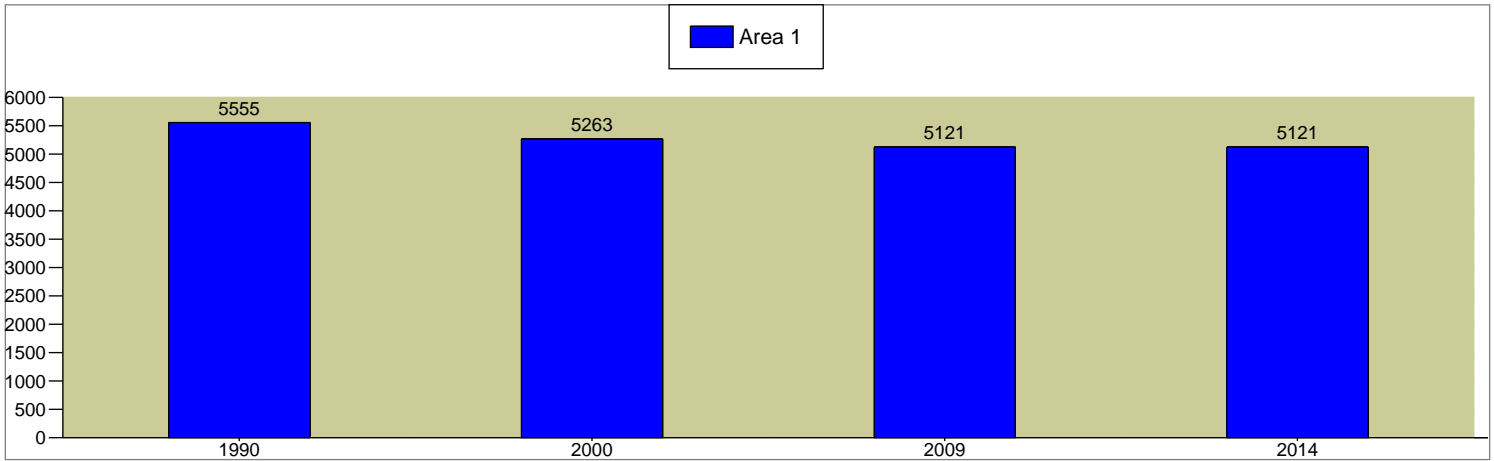


5956 Sherry Lane, Dallas, Texas, 75225

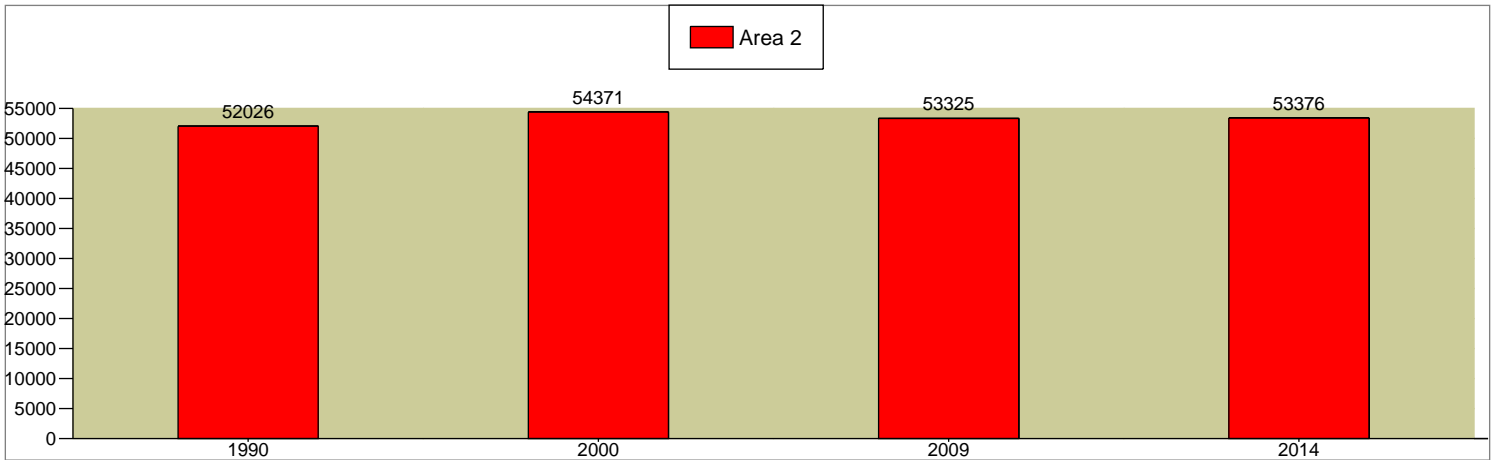
Latitude: 32.862257	32.862257, -96.809906	32.862257, -96.809906	32.862257, -96.809906
Longitude: -96.809906	Radius: 1 Miles	Radius: 3 Miles	Radius: 5 Miles

2000 - 2009 Households Annual Rate	-0.3%	-0.21%	0.2%
2009 - 2014 Households Annual Rate	0%	0.02%	0.31%

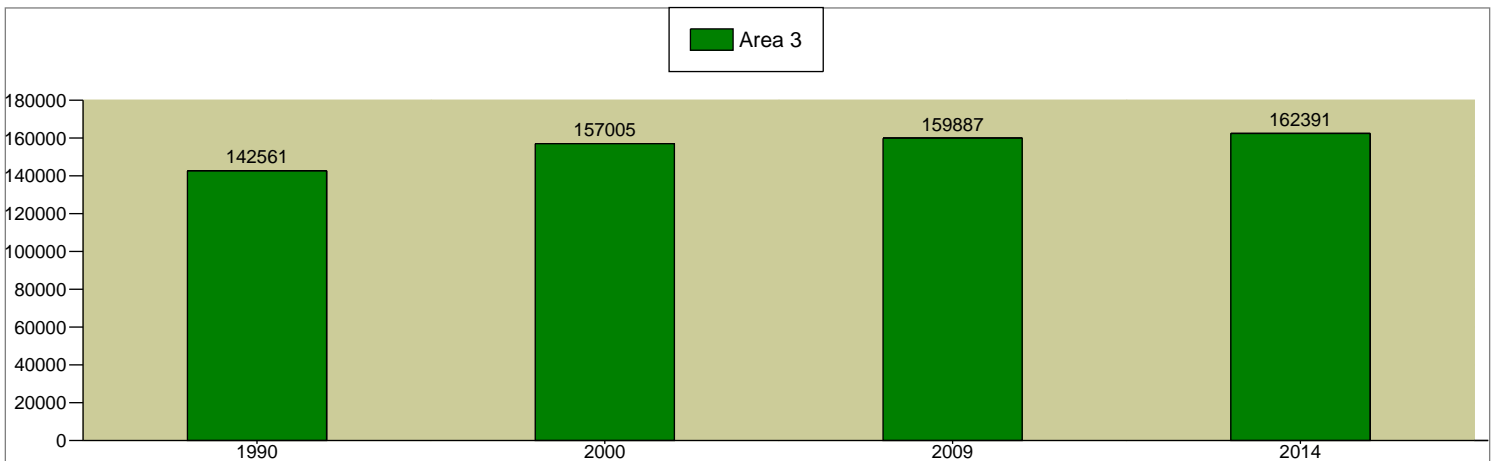
Total Households



Total Households



Total Households



Source: U.S. Bureau of the Census, 2000 Census of Population and Housing. ESRI converted 1990 Census data into 2000 geography. ESRI forecasts for 2009 and 2014.



5956 Sherry Lane, Dallas, Texas, 75225

Latitude: 32.862257

32.862257, -96.809906

32.862257, -96.809906

32.862257, -96.809906

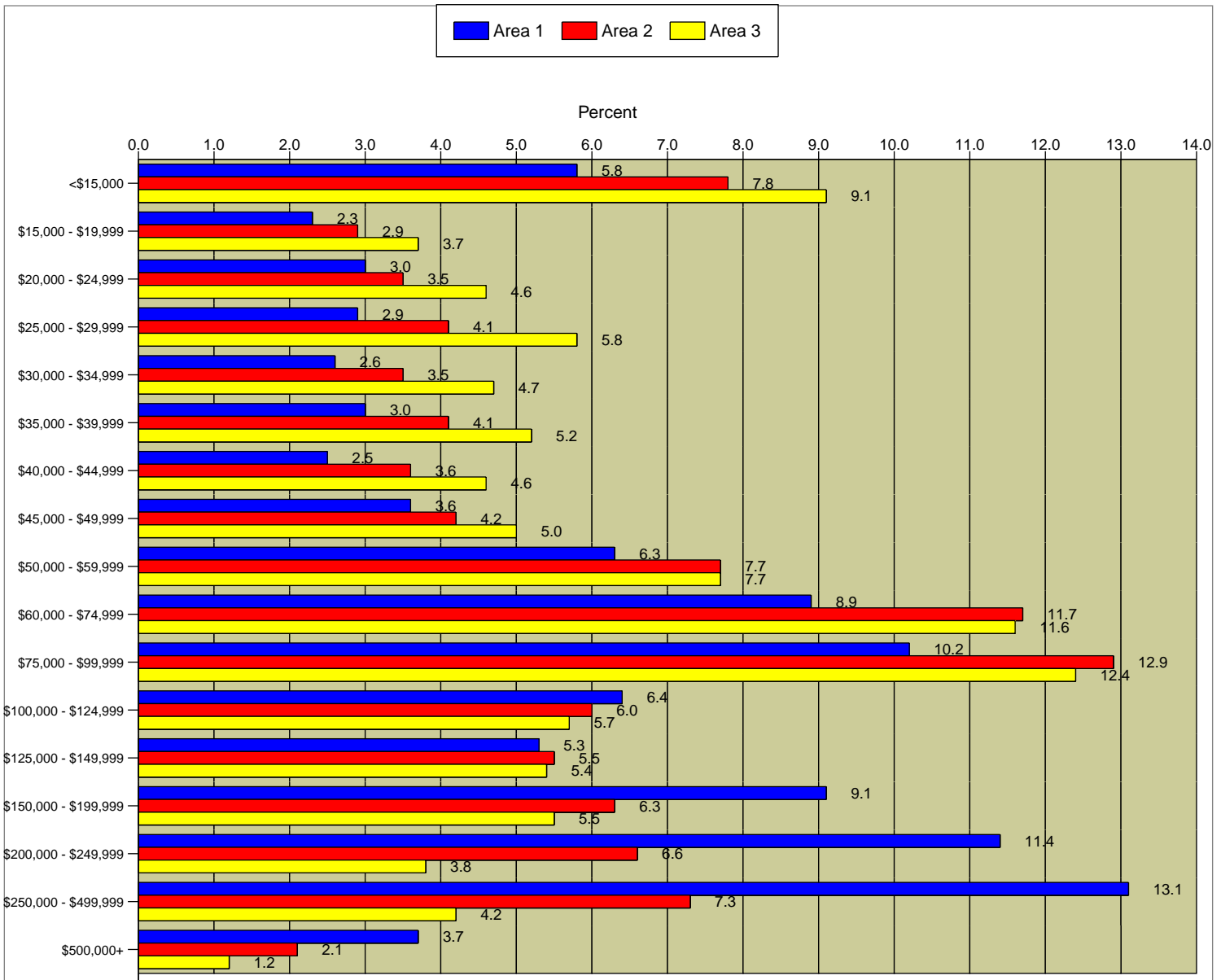
Longitude: -96.809906

Radius: 1 Miles

Radius: 3 Miles

Radius: 5 Miles

## 2009 Household Income



### Median Household Income

2000	\$85,796	\$55,340	\$44,370
2009	\$96,638	\$70,124	\$59,599
2014	\$96,522	\$71,929	\$62,342

2000 - 2009 Median Household Income Annual Rate	1.29%	2.59%	3.24%
2009 - 2014 Median Household Income Annual Rate	-0.02%	0.51%	0.9%

2009 Median Net Worth	\$499,880	\$102,265	\$45,085
-----------------------	-----------	-----------	----------

Data Note: Detail may not sum to totals due to rounding. Income represents annual income for the preceding year. Income for 2009 and 2014 is expressed in current dollars, including an adjustment for inflation.

Source: U.S. Bureau of the Census, 2000 Census of Population and Housing. ESRI forecasts for 2009 and 2014.

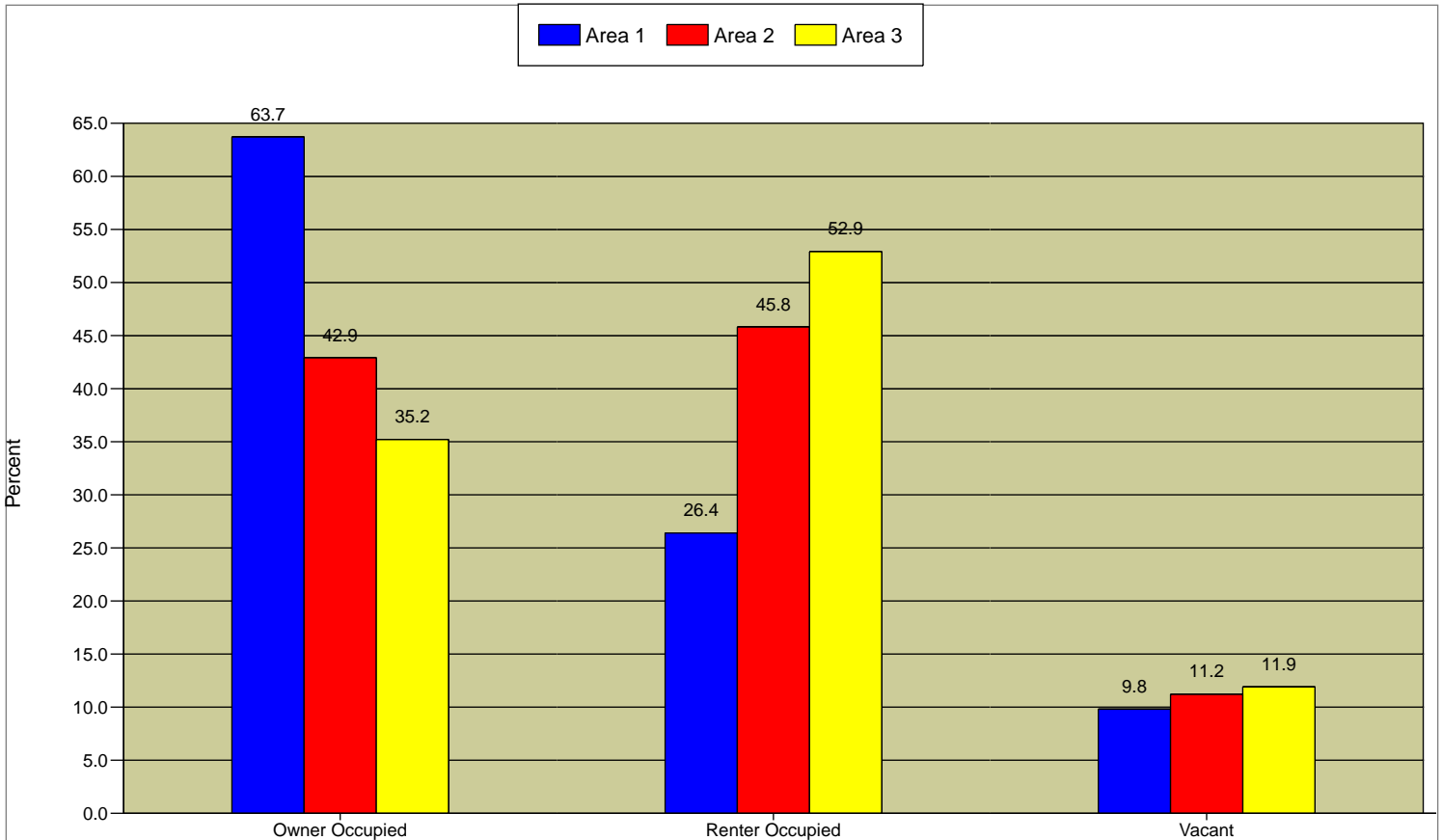


5956 Sherry Lane, Dallas, Texas, 75225

Latitude: 32.862257	32.862257, -96.809906	32.862257, -96.809906	32.862257, -96.809906
Longitude: -96.809906	Radius: 1 Miles	Radius: 3 Miles	Radius: 5 Miles

	5,572	57,837	168,474
<b>2000 Housing Units</b>			
Owner Occupied Housing Units	69.2%	46.9%	38.3%
Renter Occupied Housing Units	25.3%	47.1%	54.9%
Vacant Housing Units	5.5%	6.0%	6.8%
<b>2009 Housing Units</b>	5,679	60,074	181,420
Owner Occupied Housing Units	63.7%	42.9%	35.2%
Renter Occupied Housing Units	26.4%	45.8%	52.9%
Vacant Housing Units	9.8%	11.2%	11.9%
<b>2014 Housing Units</b>	5,687	60,412	184,032
Owner Occupied Housing Units	64.8%	43.9%	36.3%
Renter Occupied Housing Units	25.3%	44.5%	51.9%
Vacant Housing Units	10.0%	11.6%	11.8%

2009 Housing Units



**Median Home Value**

2000	\$384,678	\$310,419	\$191,138
2009	\$453,571	\$355,789	\$213,625
2014	\$496,045	\$386,479	\$229,439

Data Note: Detail may not sum to totals due to rounding.

Source: U.S. Bureau of the Census, 2000 Census of Population and Housing. ESRI forecasts for 2009 and 2014.