



5956 Sherry Lane, Dallas, Texas, 75225

Latitude: 32.862257

32.862257, -96.809906

32.862257, -96.809906

32.862257, -96.809906

Longitude: -96.809906

Radius: 1 Miles

Radius: 3 Miles

Radius: 5 Miles

2000 - 2009 Population Annual Rate

0.01%

0.16%

0.57%

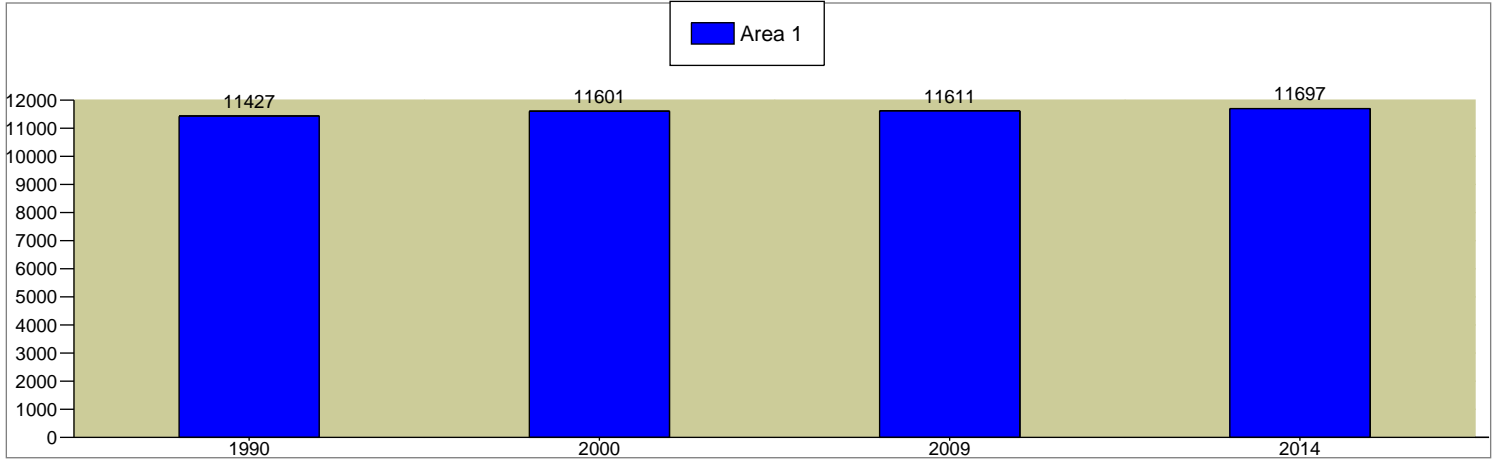
2009 - 2014 Population Annual Rate

0.15%

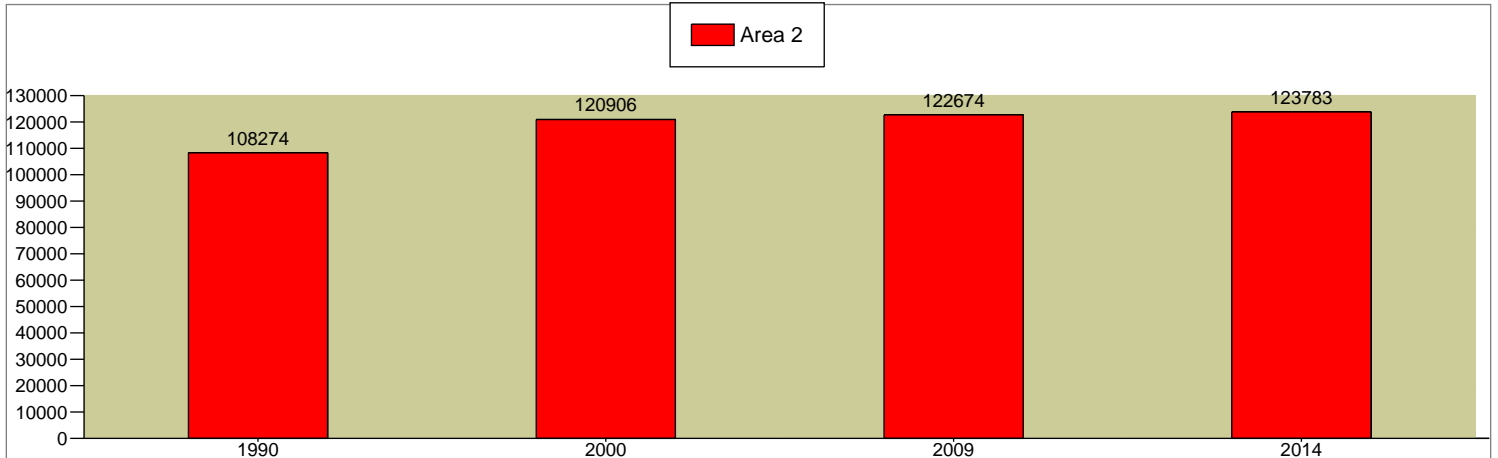
0.18%

0.39%

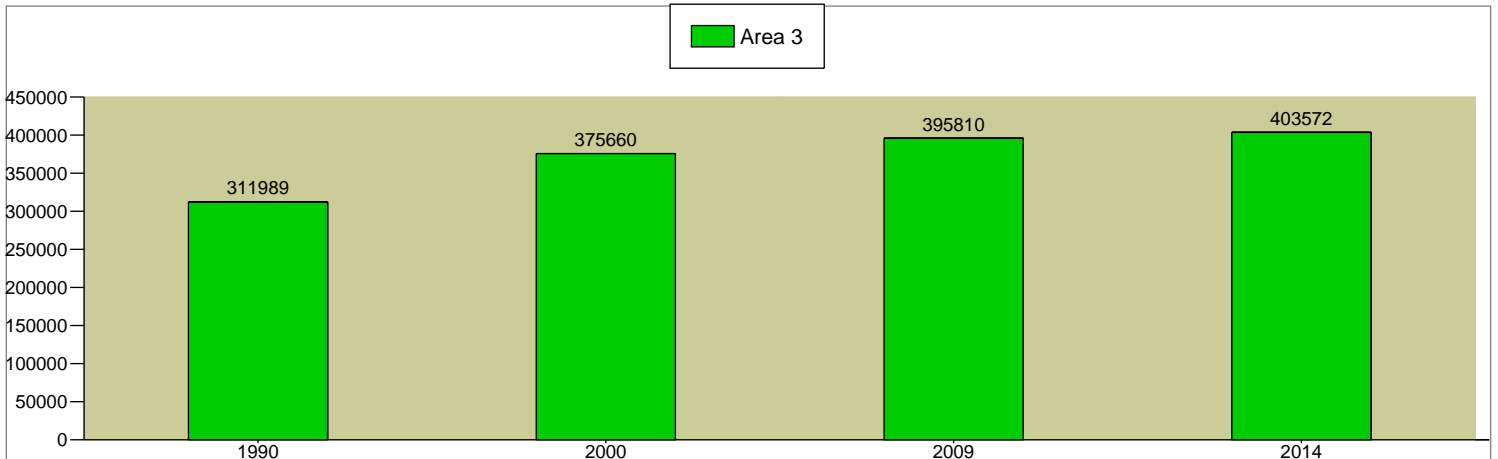
Total Population



Total Population



Total Population



Source: U.S. Bureau of the Census, 2000 Census of Population and Housing. ESRI converted 1990 Census data into 2000 geography. ESRI forecasts for 2009 and 2014.



5956 Sherry Lane, Dallas, Texas, 75225

Latitude: 32.862257

32.862257, -96.809906

32.862257, -96.809906

32.862257, -96.809906

Longitude: -96.809906

Radius: 1 Miles

Radius: 3 Miles

Radius: 5 Miles

**2000 Population by Sex**

Males	46.0%	49.5%	52.1%
Females	54.0%	50.5%	47.9%

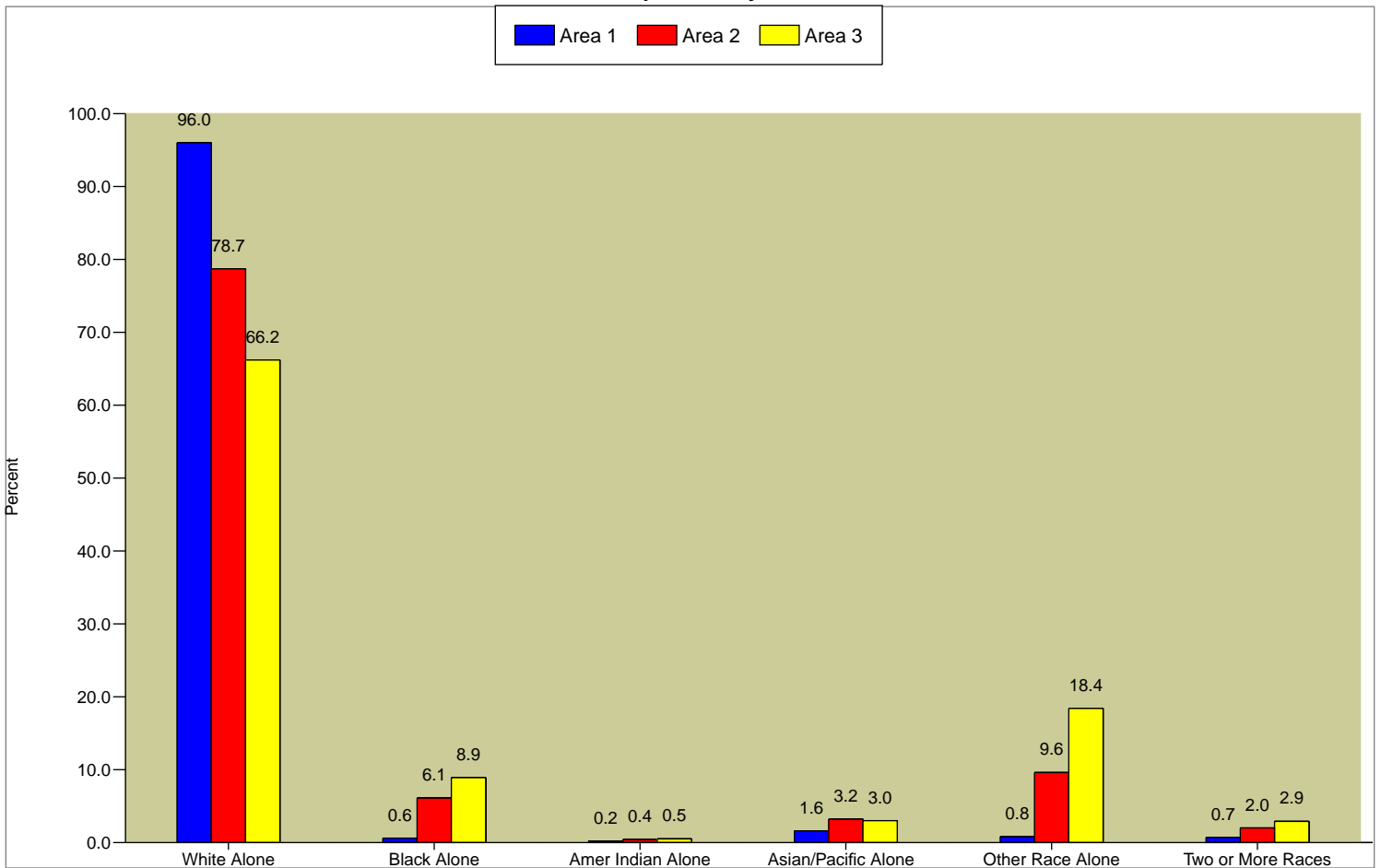
**2009 Population by Sex**

Males	46.6%	49.9%	52.1%
Females	53.4%	50.1%	47.9%

**2014 Population by Sex**

Males	47.0%	50.0%	52.1%
Females	53.0%	50.0%	47.9%

**2009 Population by Race**



2009 Hispanic Origin	4.3%	23.9%	41.8%
----------------------	------	-------	-------

**2009 Population 25+ by Educational Attainment**

Total	7,938	81,526	257,447
Less than 9th Grade	1.0%	6.6%	14.8%
9th - 12th Grade, No Diploma	1.8%	5.8%	9.9%
High School Graduate	7.5%	10.8%	14.2%
Some College, No Degree	11.2%	15.4%	15.2%
Associate Degree	2.7%	3.6%	4.0%
Bachelor's Degree	47.7%	35.1%	26.0%
Graduate/Professional Degree	28.2%	22.7%	15.8%

Data Note: Persons of Hispanic Origin may be of any race.

Source: U.S. Bureau of the Census, 2000 Census of Population and Housing. ESRI forecasts for 2009 and 2014.



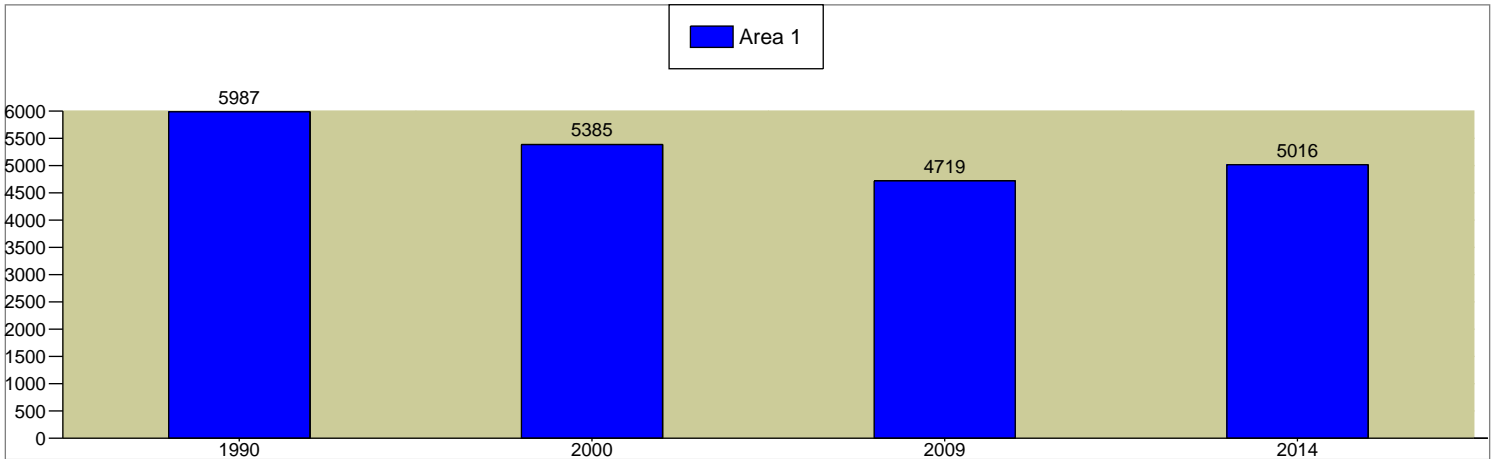


5956 Sherry Lane, Dallas, Texas, 75225

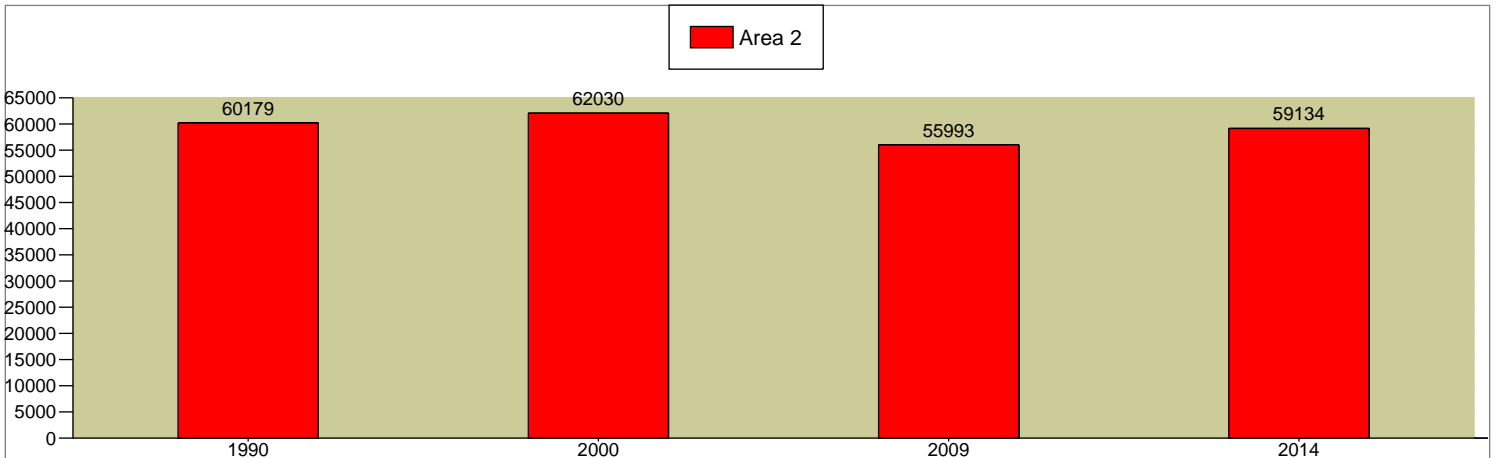
Latitude: 32.862257	32.862257, -96.809906	32.862257, -96.809906	32.862257, -96.809906
Longitude: -96.809906	Radius: 1 Miles	Radius: 3 Miles	Radius: 5 Miles

2000 - 2009 Civilian Employed Population 16+ Annual Rate	-1.42%	-1.1%	-0.7%
2009 - 2014 Civilian Employed Population 16+ Annual Rate	1.23%	1.1%	1.2%

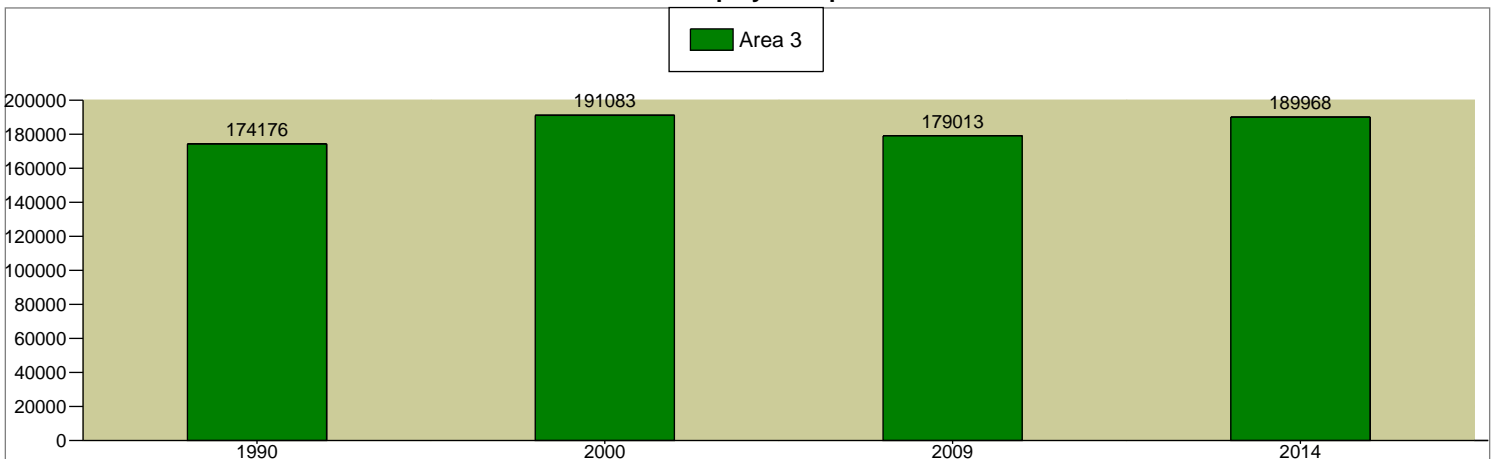
Total Civilian Employed Population 16+



Total Civilian Employed Population 16+



Total Civilian Employed Population 16+



Source: U.S. Bureau of the Census, 2000 Census of Population and Housing. ESRI converted 1990 Census data into 2000 geography. ESRI forecasts for 2009 and 2014.



5956 Sherry Lane, Dallas, Texas, 75225

Latitude: 32.862257

32.862257, -96.809906

32.862257, -96.809906

32.862257, -96.809906

Longitude: -96.809906

Radius: 1 Miles

Radius: 3 Miles

Radius: 5 Miles

**2000 Employed Population 16+ by Industry**

	Radius: 1 Miles	Radius: 3 Miles	Radius: 5 Miles
Total	5,385	62,032	191,084
Agriculture/Mining	1.3%	1.1%	0.7%
Construction	4.6%	4.8%	9.0%
Manufacturing	4.5%	6.5%	8.5%
Wholesale Trade	4.5%	3.9%	4.0%
Retail Trade	8.8%	9.3%	10.3%
Transportation/Utilities	3.7%	4.0%	4.0%
Information	5.1%	5.3%	4.8%
Finance/Insurance/Real Estate	21.2%	14.7%	11.0%
Services	45.1%	49.1%	46.4%
Public Administration	1.1%	1.3%	1.4%

**2009 Employed Population 16+ by Industry**

	Radius: 1 Miles	Radius: 3 Miles	Radius: 5 Miles
Total	4,718	55,992	179,013
Agriculture/Mining	1.6%	1.3%	0.8%
Construction	5.0%	5.2%	9.9%
Manufacturing	3.1%	4.5%	5.9%
Wholesale Trade	3.7%	3.2%	3.2%
Retail Trade	8.3%	8.8%	9.8%
Transportation/Utilities	3.4%	3.7%	3.7%
Information	3.5%	3.8%	3.3%
Finance/Insurance/Real Estate	22.1%	15.3%	11.5%
Services	48.1%	52.9%	50.4%
Public Administration	1.1%	1.3%	1.4%

**2000 Employed Population 16+ by Occupation**

	Radius: 1 Miles	Radius: 3 Miles	Radius: 5 Miles
Total	5,384	62,027	191,083
White Collar	90.6%	80.6%	66.7%
Management/Business/Financial	33.6%	24.8%	19.1%
Professional	29.7%	29.3%	22.5%
Sales	18.8%	15.6%	13.3%
Administrative Support	8.5%	10.9%	11.9%
Services	4.6%	9.4%	13.5%
Blue Collar	4.9%	10.0%	19.8%
Farming/Forestry/Fishing	0.2%	0.1%	0.1%
Construction/Extraction	1.8%	3.4%	8.0%
Installation/Maintenance/Repair	0.8%	1.4%	2.2%
Production	0.7%	2.6%	5.2%
Transportation/Material Moving	1.4%	2.6%	4.2%

**2009 Employed Population 16+ by Occupation**

	Radius: 1 Miles	Radius: 3 Miles	Radius: 5 Miles
Total	4,720	55,993	179,013
White Collar	89.9%	79.6%	65.3%
Management/Business/Financial	33.5%	24.7%	19.1%
Professional	31.1%	30.3%	23.1%
Sales	18.1%	15.1%	12.9%
Administrative Support	7.2%	9.5%	10.2%
Services	5.3%	10.8%	15.7%
Blue Collar	4.8%	9.5%	19.0%
Farming/Forestry/Fishing	0.1%	0.1%	0.1%
Construction/Extraction	2.0%	3.8%	8.9%
Installation/Maintenance/Repair	0.7%	1.1%	1.8%
Production	0.6%	2.2%	4.4%
Transportation/Material Moving	1.3%	2.4%	3.8%

Data Note: Detail may not sum to totals due to rounding.

Source: U.S. Bureau of the Census, 2000 Census of Population and Housing. ESRI forecasts for 2009 and 2014.



5956 Sherry Lane, Dallas, Texas, 75225

Latitude: 32.862257

32.862257, -96.809906

32.862257, -96.809906

32.862257, -96.809906

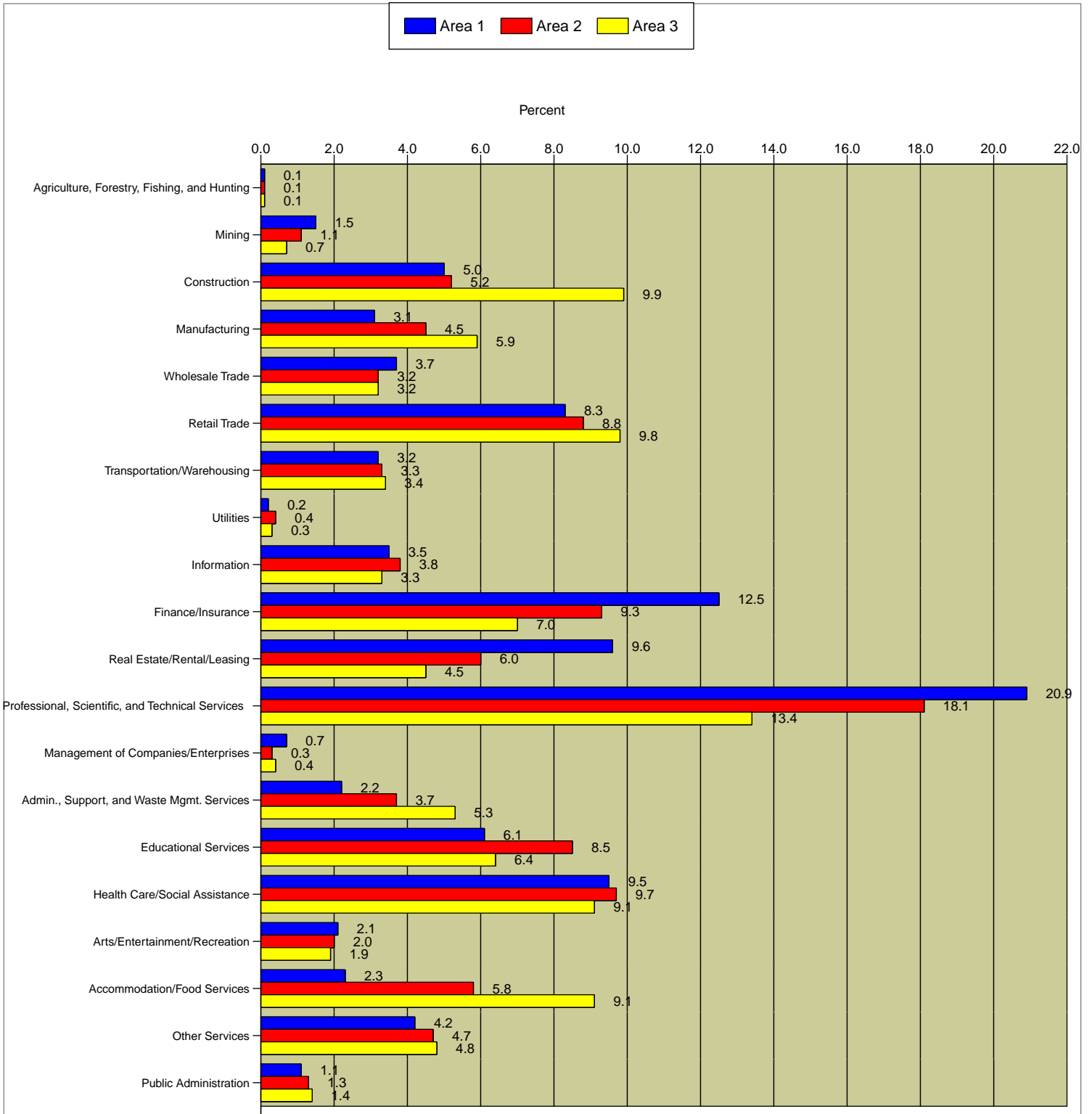
Longitude: -96.809906

Radius: 1 Miles

Radius: 3 Miles

Radius: 5 Miles

2009 Employed Civilian Population 16+ by Industry



Data Note: Industry descriptions based on 2000 Census of Population and Housing definitions.

Source: ESRI forecasts for 2009.



5956 Sherry Lane, Dallas, Texas, 75225

Latitude: 32.862257

32.862257, -96.809906

32.862257, -96.809906

32.862257, -96.809906

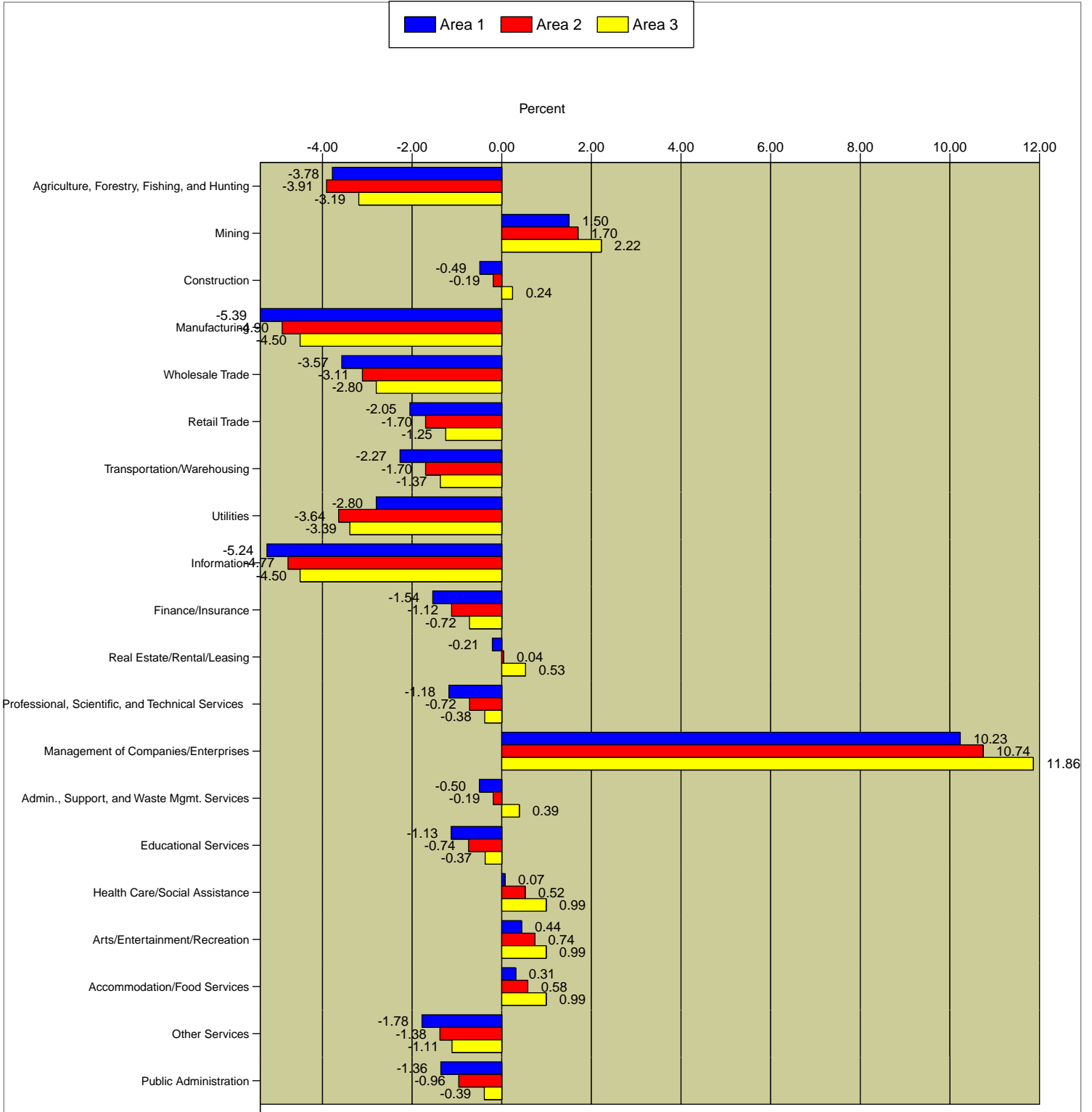
Longitude: -96.809906

Radius: 1 Miles

Radius: 3 Miles

Radius: 5 Miles

2000 - 2009 Population by Industry Annual Rate



Data Note: Industry descriptions based on 2000 Census of Population and Housing definitions.

Source: ESRI forecasts for 2009.

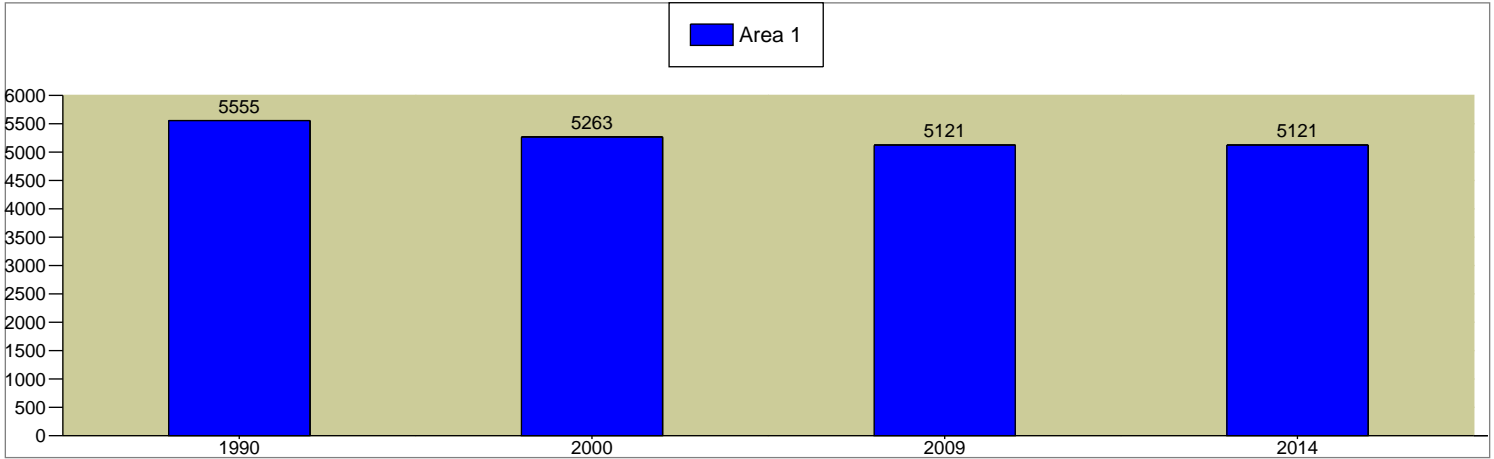


5956 Sherry Lane, Dallas, Texas, 75225

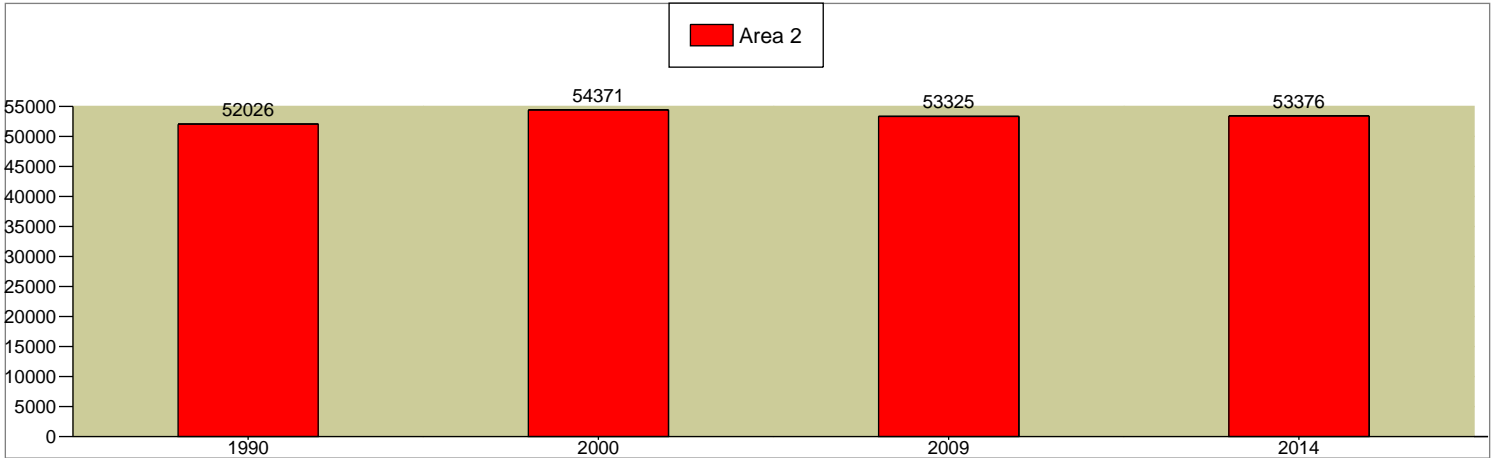
Latitude: 32.862257	32.862257, -96.809906	32.862257, -96.809906	32.862257, -96.809906
Longitude: -96.809906	Radius: 1 Miles	Radius: 3 Miles	Radius: 5 Miles

2000 - 2009 Households Annual Rate	-0.3%	-0.21%	0.2%
2009 - 2014 Households Annual Rate	0%	0.02%	0.31%

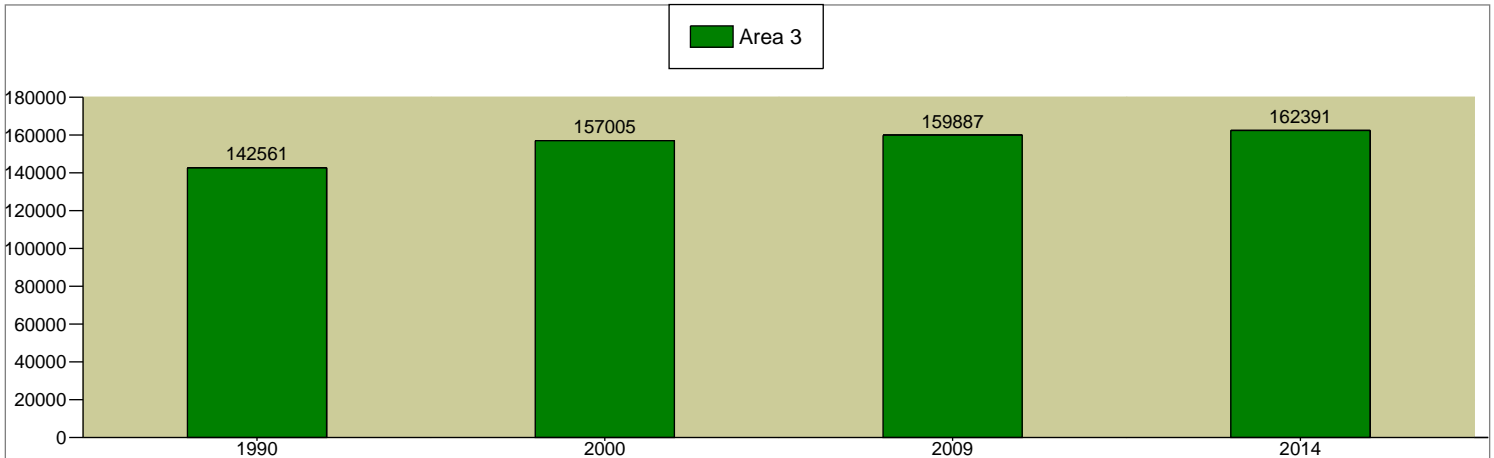
Total Households



Total Households



Total Households



Source: U.S. Bureau of the Census, 2000 Census of Population and Housing. ESRI converted 1990 Census data into 2000 geography. ESRI forecasts for 2009 and 2014.



5956 Sherry Lane, Dallas, Texas, 75225

Latitude: 32.862257

32.862257, -96.809906

32.862257, -96.809906

32.862257, -96.809906

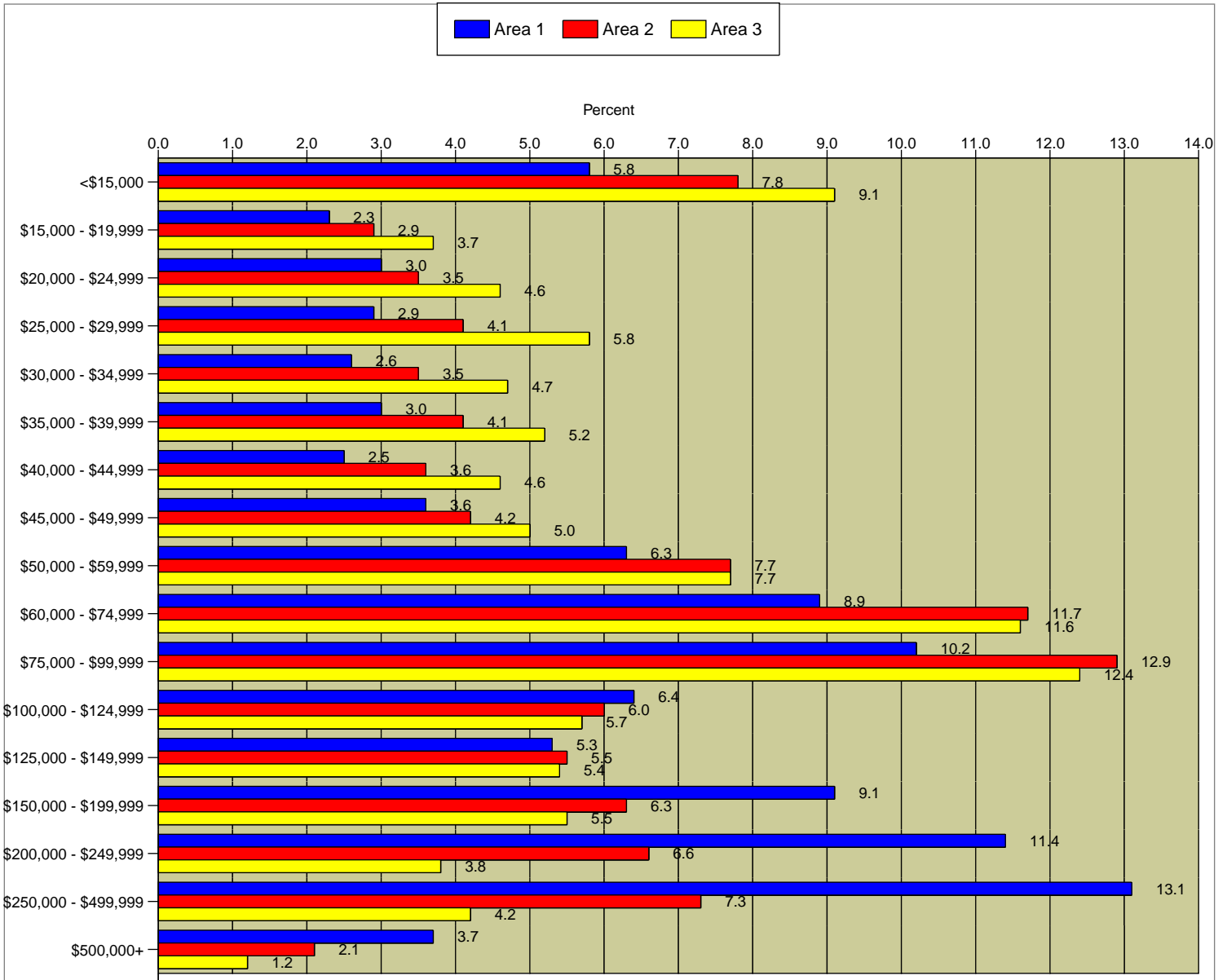
Longitude: -96.809906

Radius: 1 Miles

Radius: 3 Miles

Radius: 5 Miles

2009 Household Income



Median Household Income

2000	\$85,796	\$55,340	\$44,370
2009	\$96,638	\$70,124	\$59,599
2014	\$96,522	\$71,929	\$62,342

2000 - 2009 Median Household Income Annual Rate	1.29%	2.59%	3.24%
2009 - 2014 Median Household Income Annual Rate	-0.02%	0.51%	0.9%

2009 Median Net Worth	\$499,880	\$102,265	\$45,085
-----------------------	-----------	-----------	----------

Data Note: Detail may not sum to totals due to rounding. Income represents annual income for the preceding year. Income for 2009 and 2014 is expressed in current dollars, including an adjustment for inflation.

Source: U.S. Bureau of the Census, 2000 Census of Population and Housing. ESRI forecasts for 2009 and 2014.