



5956 Sherry Lane, Dallas, Texas, 75225

Latitude: 32.861976

32.861976, -96.809829

32.861976, -96.809829

32.861976, -96.809829

Longitude: -96.809829

Radius: 1 Miles

Radius: 3 Miles

Radius: 5 Miles

2000 - 2009 Population Annual Rate

0%

0.19%

0.57%

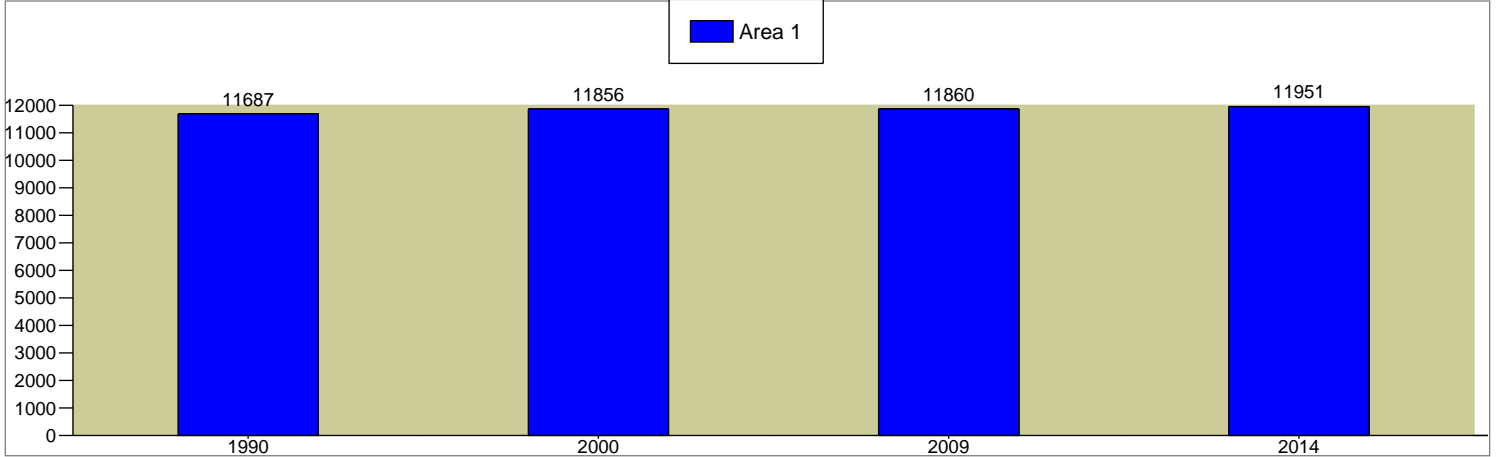
2009 - 2014 Population Annual Rate

0.15%

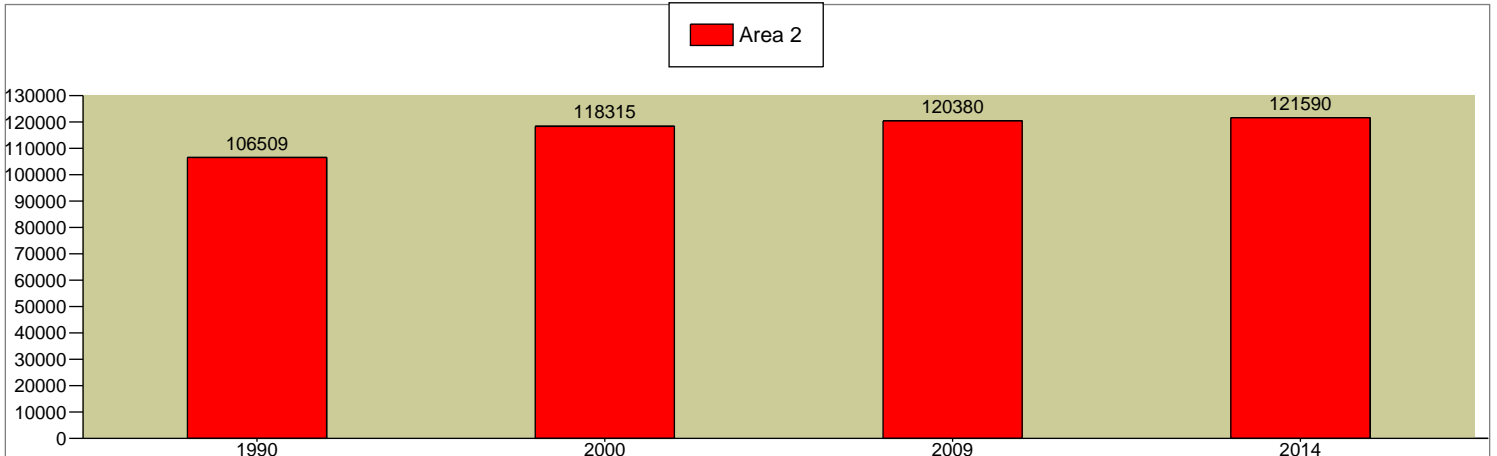
0.2%

0.39%

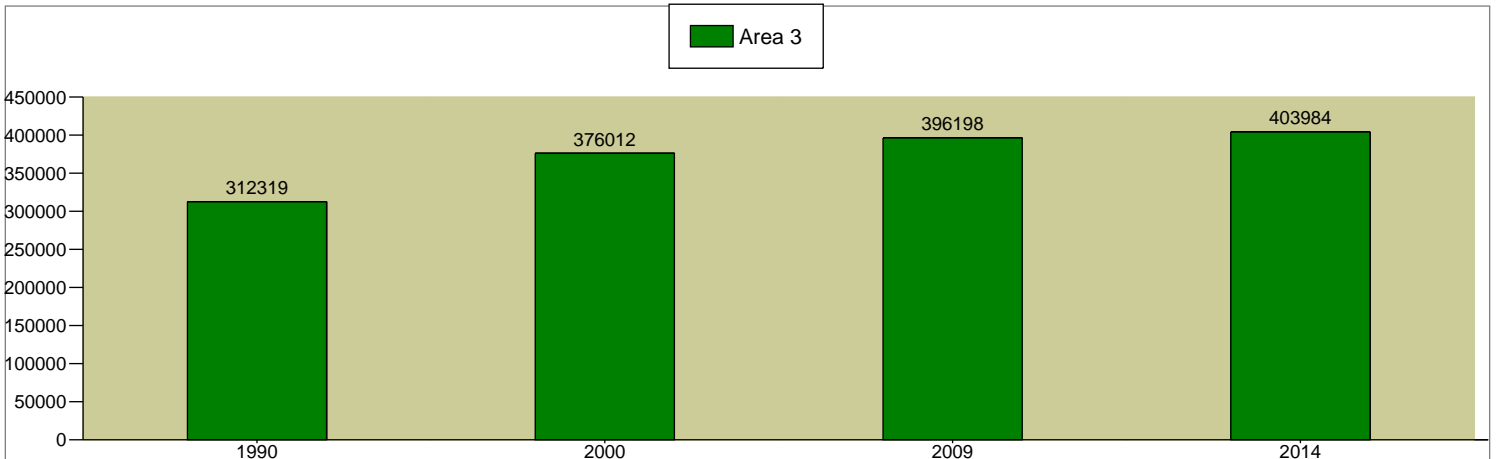
Total Population



Total Population



Total Population



Source: U.S. Bureau of the Census, 2000 Census of Population and Housing. ESRI converted 1990 Census data into 2000 geography. ESRI forecasts for 2009 and 2014.



5956 Sherry Lane, Dallas, Texas, 75225

|                       |                       |                       |                       |
|-----------------------|-----------------------|-----------------------|-----------------------|
| Latitude: 32.861976   | 32.861976, -96.809829 | 32.861976, -96.809829 | 32.861976, -96.809829 |
| Longitude: -96.809829 | Radius: 1 Miles       | Radius: 3 Miles       | Radius: 5 Miles       |

### 2000 Population by Sex

|         |       |       |       |
|---------|-------|-------|-------|
| Males   | 46.0% | 49.6% | 52.1% |
| Females | 54.0% | 50.4% | 47.9% |

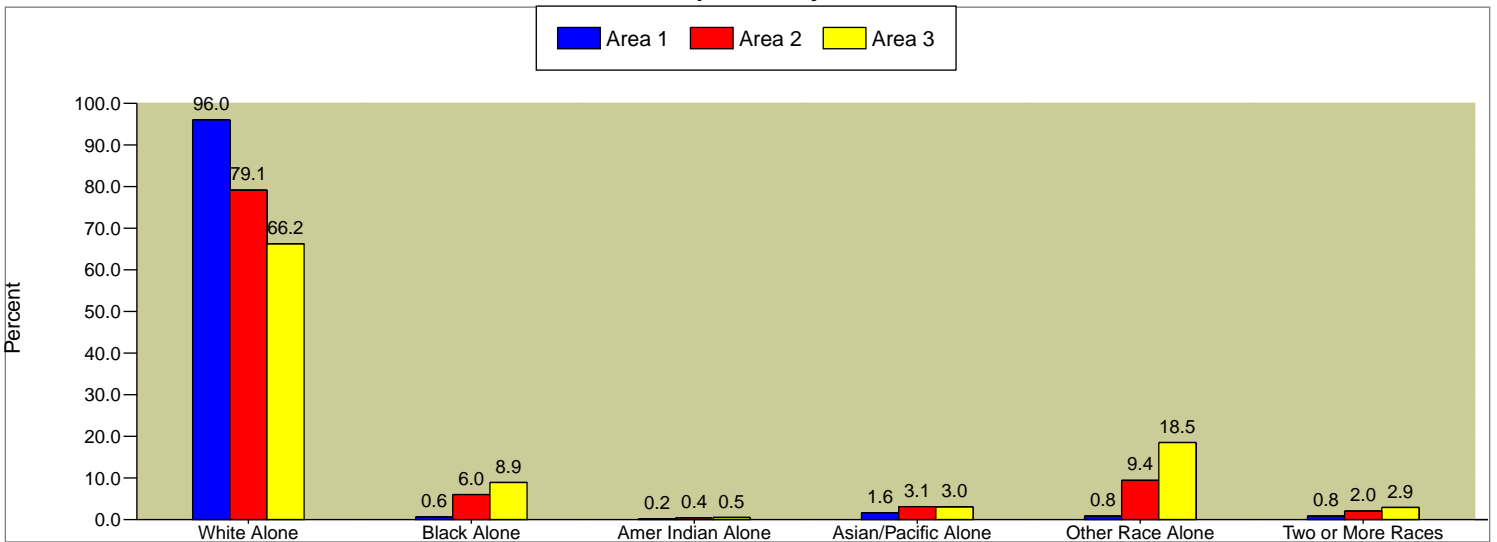
### 2009 Population by Sex

|         |       |       |       |
|---------|-------|-------|-------|
| Males   | 46.7% | 50.0% | 52.1% |
| Females | 53.3% | 50.0% | 47.9% |

### 2014 Population by Sex

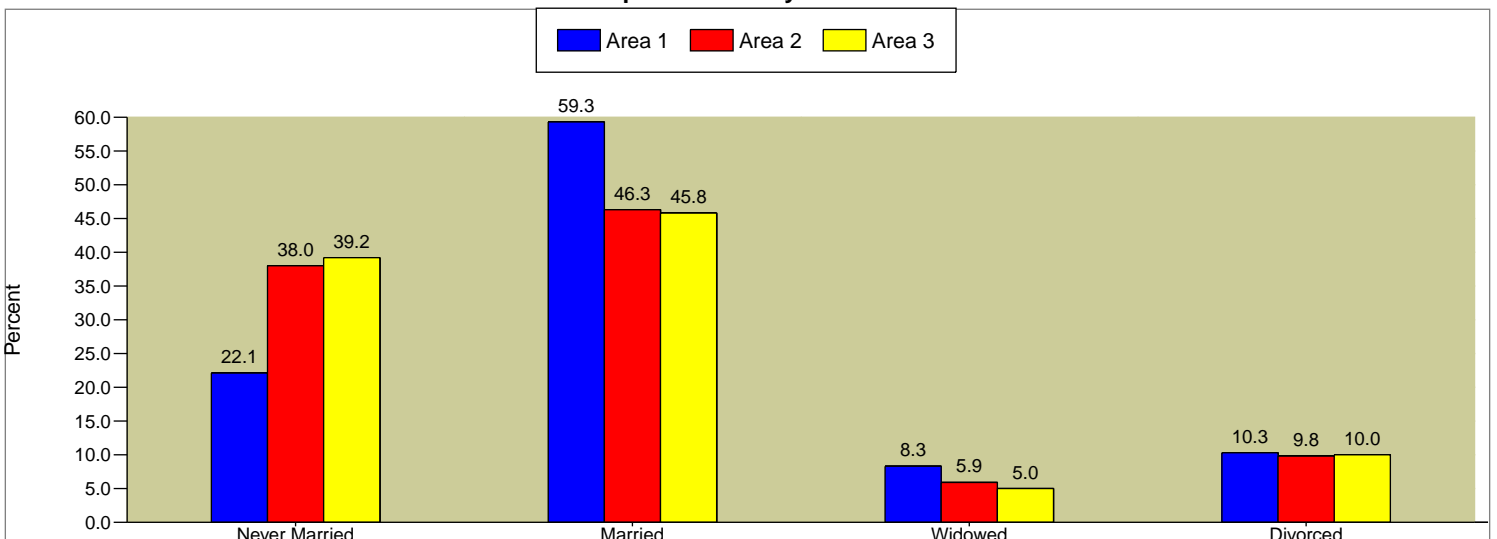
|         |       |       |       |
|---------|-------|-------|-------|
| Males   | 47.0% | 50.1% | 52.1% |
| Females | 53.0% | 49.9% | 47.9% |

### 2009 Population by Race



|                      |      |       |       |
|----------------------|------|-------|-------|
| 2009 Hispanic Origin | 4.4% | 23.8% | 41.8% |
|----------------------|------|-------|-------|

### 2009 Population 15+ by Marital Status



Data Note: Persons of Hispanic Origin may be of any race

Source: U.S. Bureau of the Census, 2000 Census of Population and Housing. ESRI forecasts for 2009 and 2014.



# Self Storage Express Pack

Prepared by STDBOnline

5956 Sherry Lane, Dallas, Texas, 75225

Latitude: 32.861976

32.861976, -96.809829

32.861976, -96.809829

32.861976, -96.809829

Longitude: -96.809829

Radius: 1 Miles

Radius: 3 Miles

Radius: 5 Miles

## 2000 Population by Age

|              | Radius: 1 Miles | Radius: 3 Miles | Radius: 5 Miles |
|--------------|-----------------|-----------------|-----------------|
| <b>Total</b> | 11,857          | 118,315         | 376,011         |
| 0 - 4        | 7.1%            | 6.4%            | 7.7%            |
| 5 - 9        | 7.6%            | 6.1%            | 6.4%            |
| 10 - 14      | 6.9%            | 5.6%            | 5.3%            |
| 15 - 19      | 4.9%            | 6.1%            | 6.0%            |
| 20 - 24      | 1.8%            | 8.1%            | 9.2%            |
| 25 - 34      | 13.0%           | 18.8%           | 21.5%           |
| 35 - 44      | 18.4%           | 16.1%           | 15.9%           |
| 45 - 54      | 15.4%           | 12.9%           | 11.3%           |
| 55 - 64      | 9.4%            | 7.7%            | 6.5%            |
| 65 - 74      | 6.3%            | 5.5%            | 4.6%            |
| 75 - 84      | 6.3%            | 4.8%            | 3.8%            |
| 85+          | 2.8%            | 2.0%            | 1.6%            |

## 2009 Population by Age

|              | Radius: 1 Miles | Radius: 3 Miles | Radius: 5 Miles |
|--------------|-----------------|-----------------|-----------------|
| <b>Total</b> | 11,861          | 120,378         | 396,198         |
| 0 - 4        | 6.4%            | 6.0%            | 7.4%            |
| 5 - 9        | 7.7%            | 6.1%            | 6.6%            |
| 10 - 14      | 8.5%            | 6.4%            | 6.0%            |
| 15 - 19      | 6.3%            | 7.0%            | 6.3%            |
| 20 - 24      | 2.7%            | 8.2%            | 8.6%            |
| 25 - 34      | 7.1%            | 15.6%           | 18.5%           |
| 35 - 44      | 15.7%           | 13.9%           | 14.7%           |
| 45 - 54      | 17.6%           | 14.5%           | 13.0%           |
| 55 - 64      | 12.2%           | 10.4%           | 8.8%            |
| 65 - 74      | 6.7%            | 5.5%            | 4.6%            |
| 75 - 84      | 5.4%            | 4.0%            | 3.4%            |
| 85+          | 3.7%            | 2.4%            | 2.0%            |

## 2014 Population by Age

|              | Radius: 1 Miles | Radius: 3 Miles | Radius: 5 Miles |
|--------------|-----------------|-----------------|-----------------|
| <b>Total</b> | 11,950          | 121,591         | 403,986         |
| 0 - 4        | 5.9%            | 5.8%            | 7.3%            |
| 5 - 9        | 7.2%            | 5.8%            | 6.5%            |
| 10 - 14      | 7.9%            | 6.0%            | 5.9%            |
| 15 - 19      | 6.6%            | 7.0%            | 6.2%            |
| 20 - 24      | 3.3%            | 8.8%            | 9.1%            |
| 25 - 34      | 8.2%            | 15.7%           | 18.4%           |
| 35 - 44      | 11.0%           | 11.6%           | 12.9%           |
| 45 - 54      | 18.3%           | 14.3%           | 12.8%           |
| 55 - 64      | 13.9%           | 11.7%           | 9.8%            |
| 65 - 74      | 8.6%            | 7.1%            | 5.8%            |
| 75 - 84      | 5.3%            | 3.9%            | 3.3%            |
| 85+          | 3.8%            | 2.4%            | 2.0%            |

## Median Age

|      | Radius: 1 Miles | Radius: 3 Miles | Radius: 5 Miles |
|------|-----------------|-----------------|-----------------|
| 2000 | 39.9            | 34.4            | 31.9            |
| 2009 | 42.6            | 35.6            | 32.9            |
| 2014 | 44.9            | 35.9            | 32.9            |

Source: U.S. Bureau of the Census, 2000 Census of Population and Housing. ESRI forecasts for 2009 and 2014.

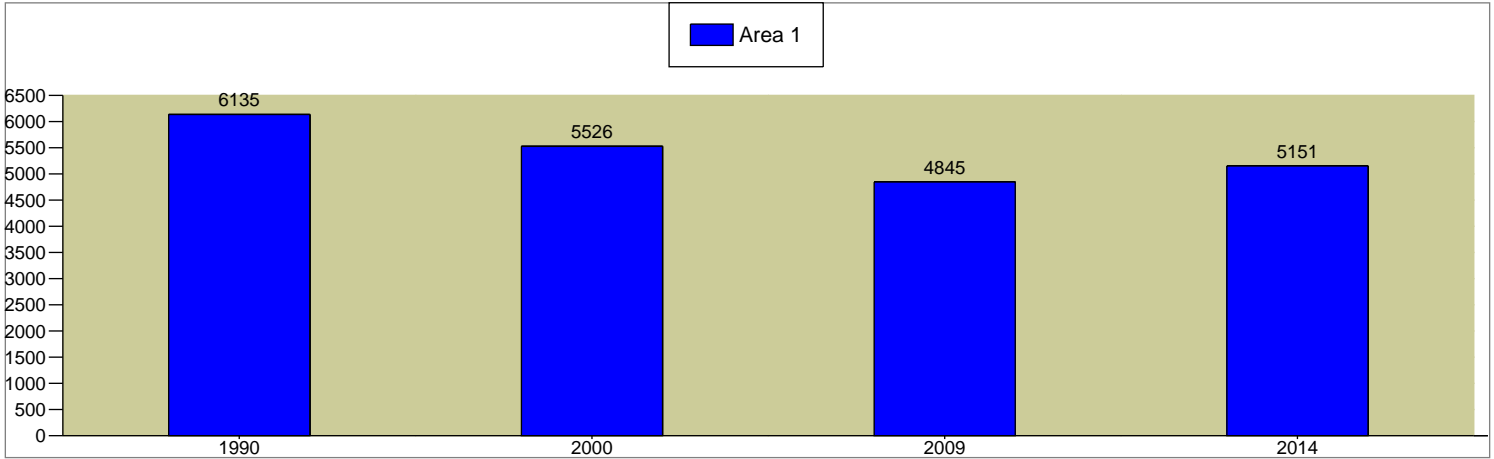


5956 Sherry Lane, Dallas, Texas, 75225

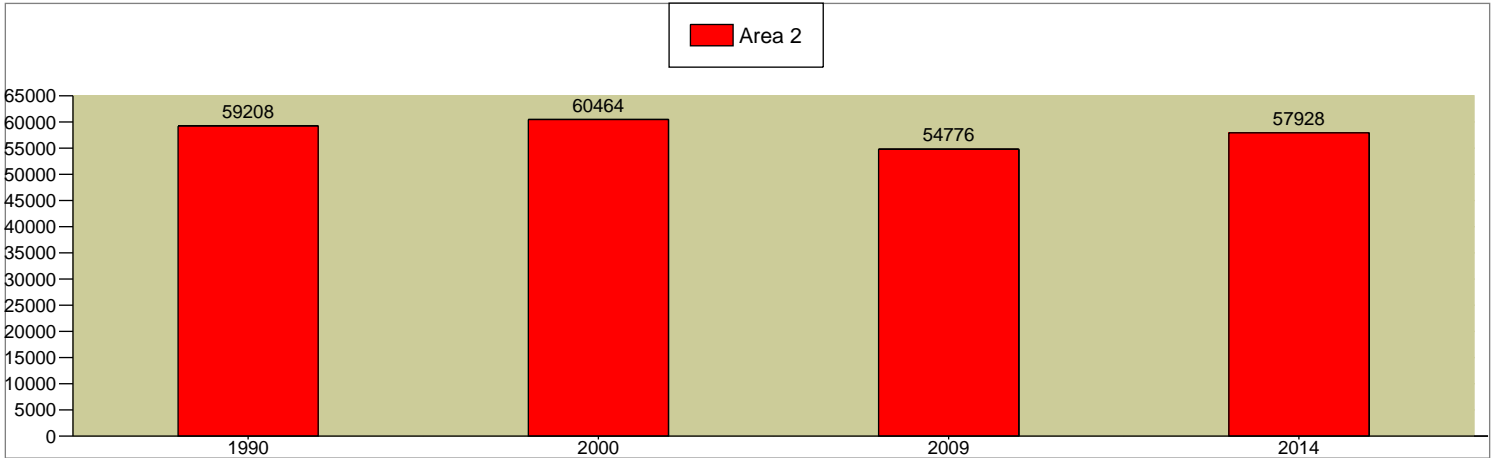
|                       |                       |                       |                       |
|-----------------------|-----------------------|-----------------------|-----------------------|
| Latitude: 32.861976   | 32.861976, -96.809829 | 32.861976, -96.809829 | 32.861976, -96.809829 |
| Longitude: -96.809829 | Radius: 1 Miles       | Radius: 3 Miles       | Radius: 5 Miles       |

|  |        |        |       |
|--|--------|--------|-------|
| 2000 - 2009 Civilian Employed Population 16+ Annual Rate | -1.41% | -1.06% | -0.7% |
| 2009 - 2014 Civilian Employed Population 16+ Annual Rate | 1.23%  | 1.13%  | 1.2%  |

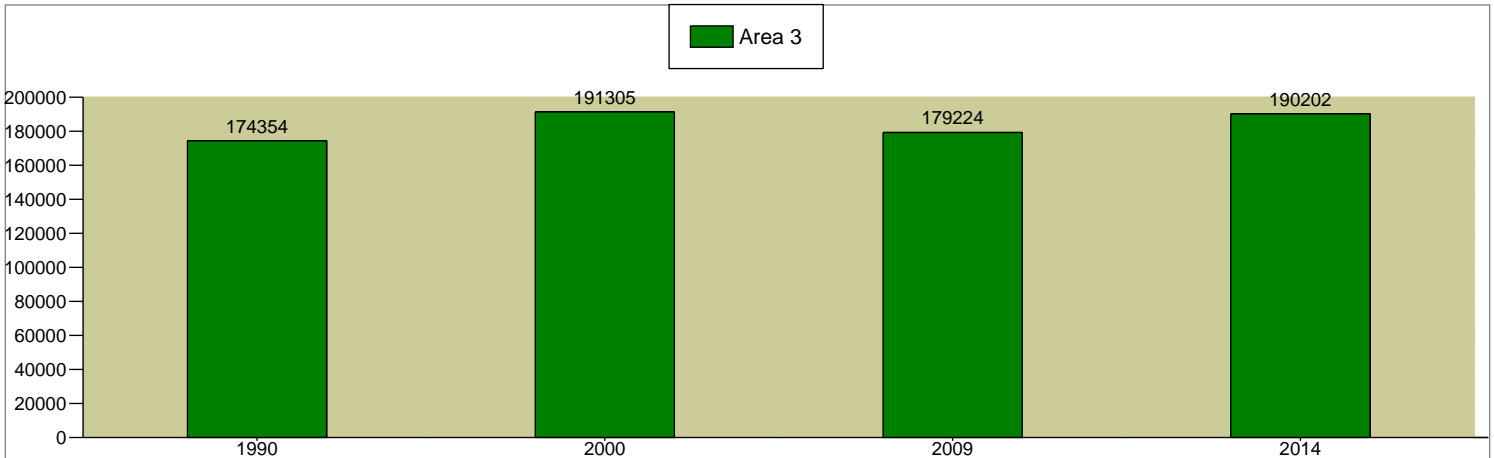
**Total Civilian Employed Population 16+**



**Total Civilian Employed Population 16+**



**Total Civilian Employed Population 16+**



Source: U.S. Bureau of the Census, 2000 Census of Population and Housing. ESRI converted 1990 Census data into 2000 geography. ESRI forecasts for 2009 and 2014.



5956 Sherry Lane, Dallas, Texas, 75225

Latitude: 32.861976

32.861976, -96.809829

32.861976, -96.809829

32.861976, -96.809829

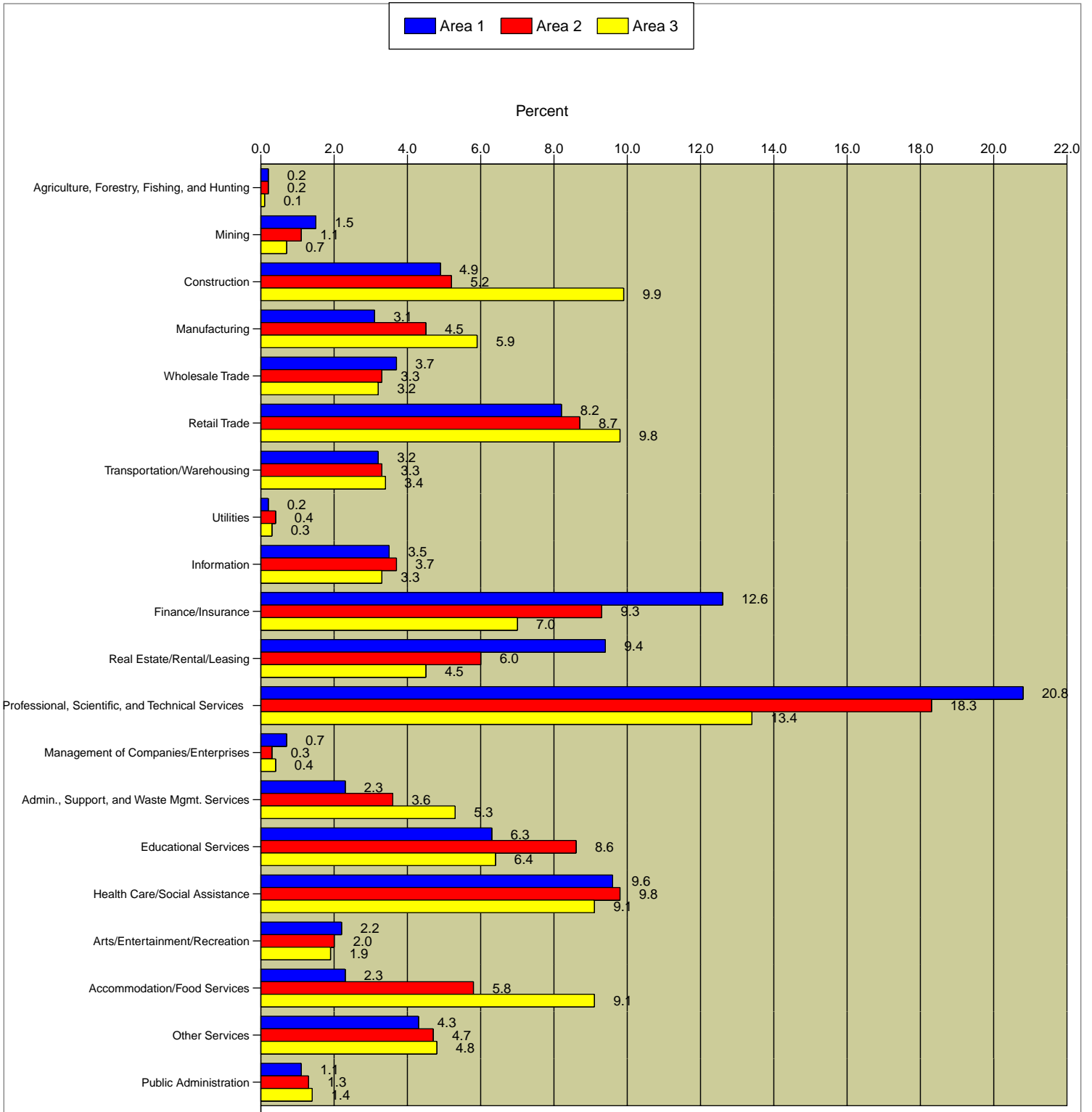
Longitude: -96.809829

Radius: 1 Miles

Radius: 3 Miles

Radius: 5 Miles

## 2009 Employed Civilian Population 16+ by Industry



Data Note: Industry descriptions based on 2000 Census of Population and Housing definitions.

Source: ESRI forecasts for 2009.



5956 Sherry Lane, Dallas, Texas, 75225

Latitude: 32.861976

32.861976, -96.809829

32.861976, -96.809829

32.861976, -96.809829

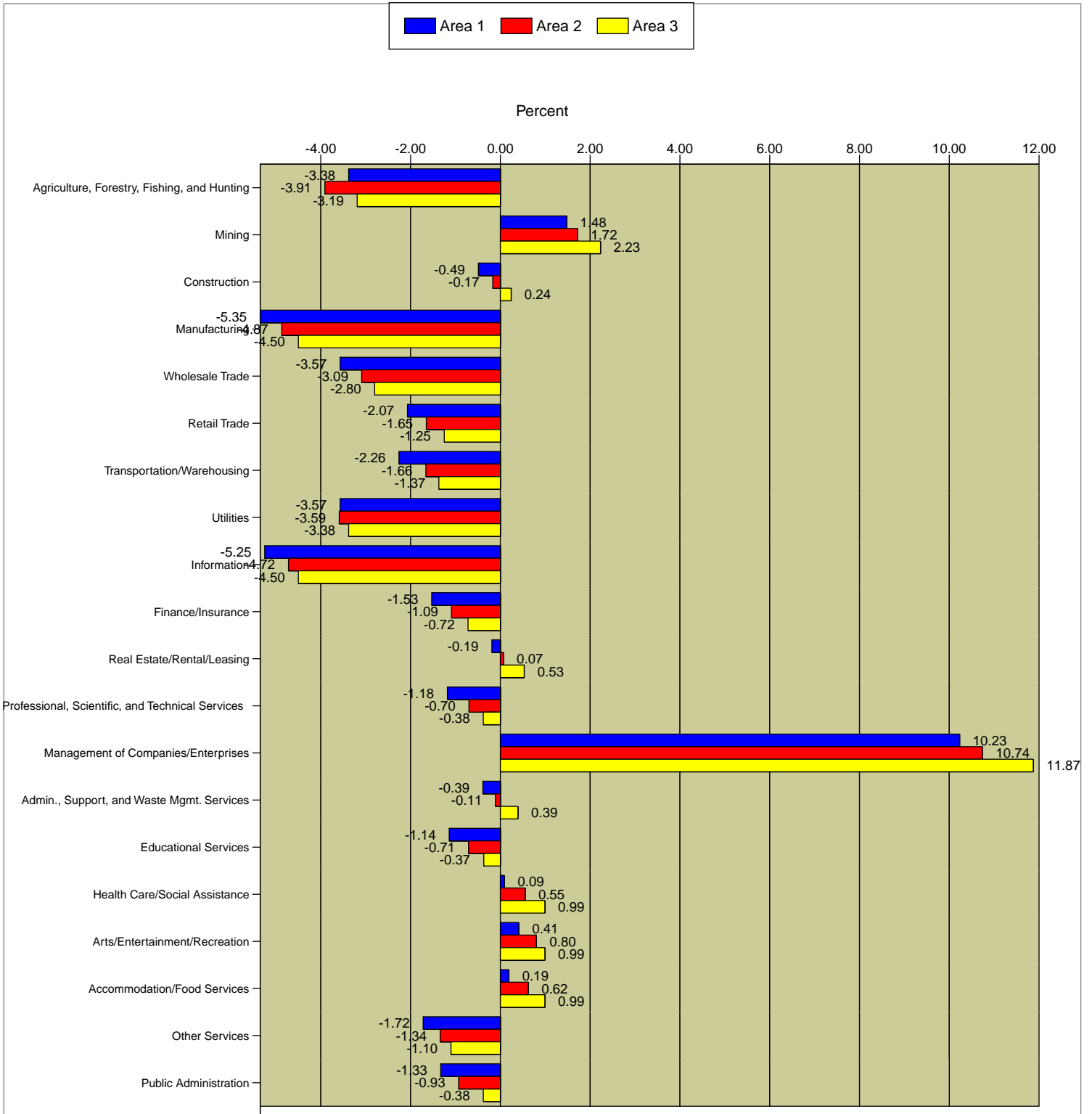
Longitude: -96.809829

Radius: 1 Miles

Radius: 3 Miles

Radius: 5 Miles

## 2000 - 2009 Population by Industry Annual Rate



Data Note: Industry descriptions based on 2000 Census of Population and Housing definitions.

Source: ESRI forecasts for 2009.



5956 Sherry Lane, Dallas, Texas, 75225

Latitude: 32.861976

32.861976, -96.809829

32.861976, -96.809829

32.861976, -96.809829

Longitude: -96.809829

Radius: 1 Miles

Radius: 3 Miles

Radius: 5 Miles

2000 - 2009 Households Annual Rate

-0.3%

-0.17%

0.2%

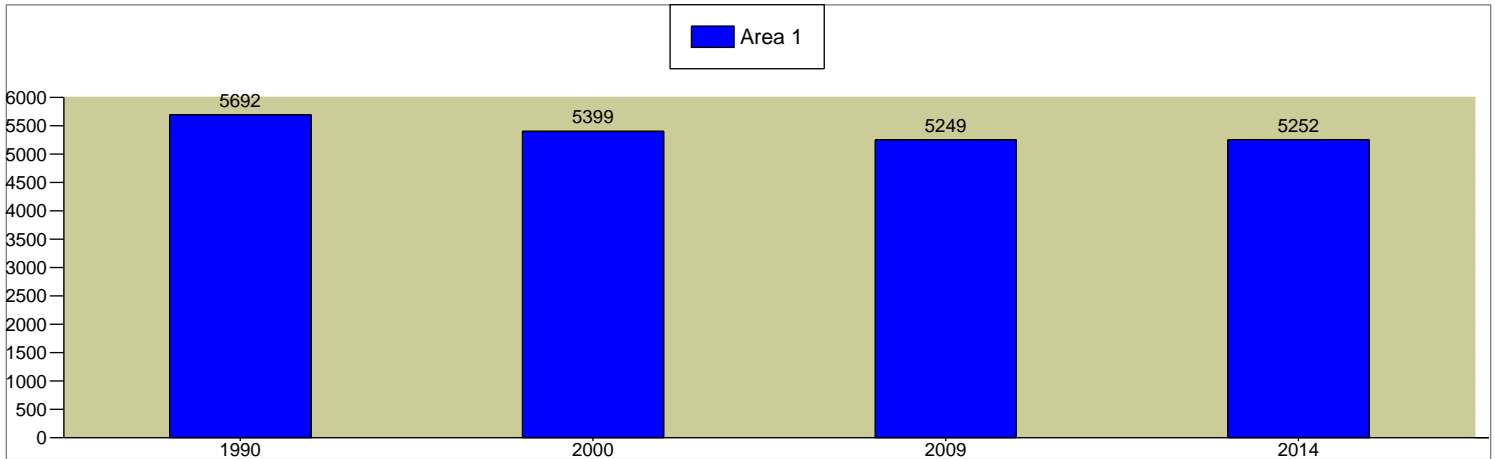
2009 - 2014 Households Annual Rate

0.01%

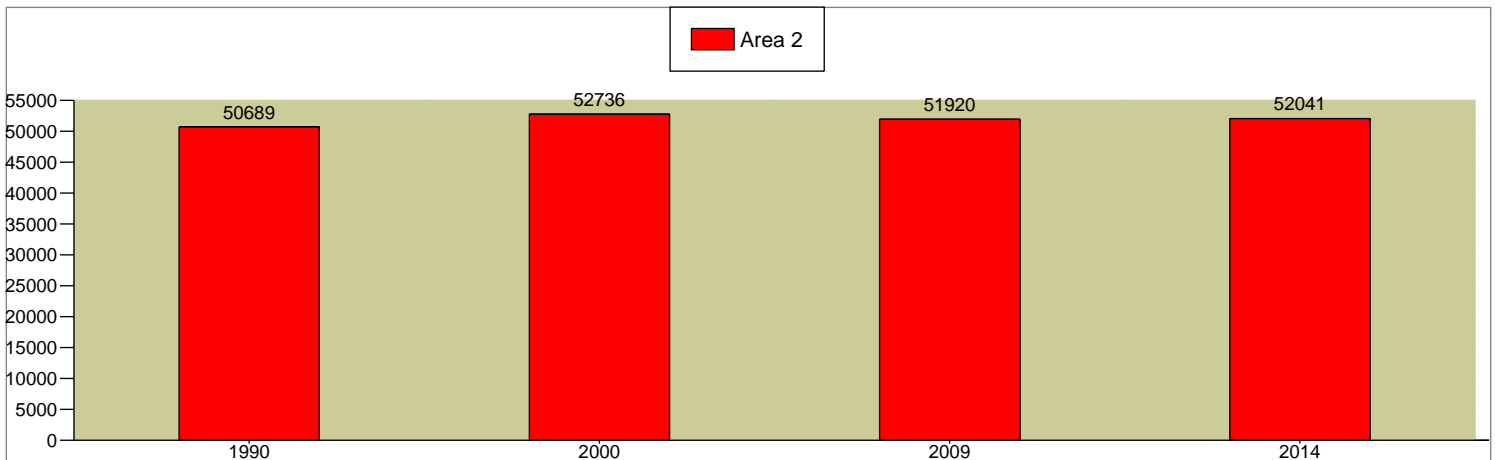
0.05%

0.31%

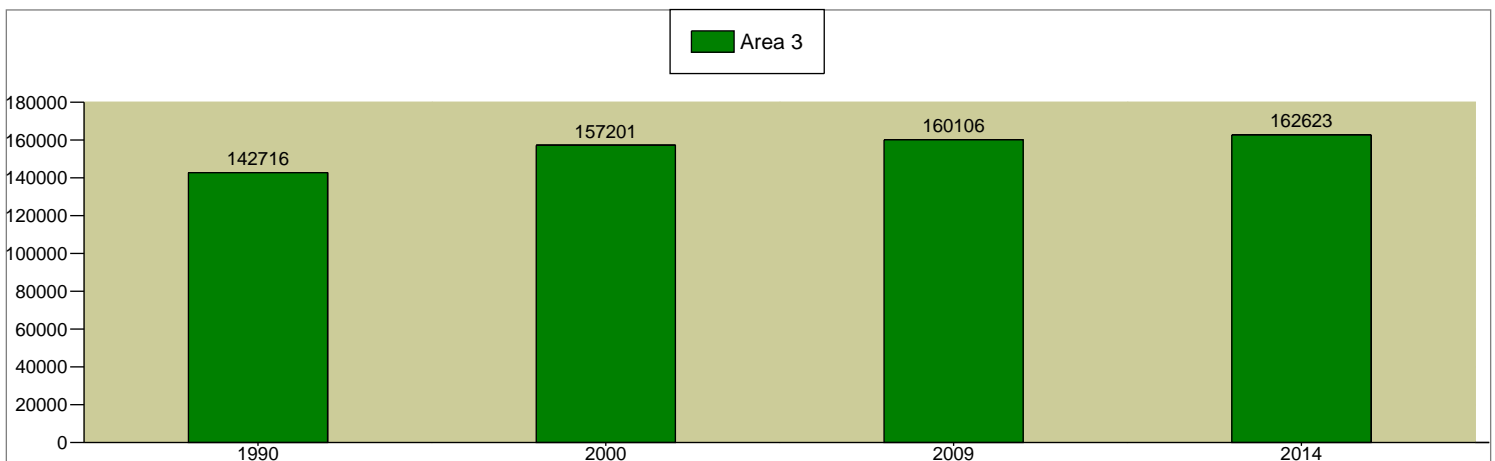
Total Households



Total Households



Total Households



Source: U.S. Bureau of the Census, 2000 Census of Population and Housing. ESRI converted 1990 Census data into 2000 geography. ESRI forecasts for 2009 and 2014.



5956 Sherry Lane, Dallas, Texas, 75225

Latitude: 32.861976

32.861976, -96.809829

32.861976, -96.809829

32.861976, -96.809829

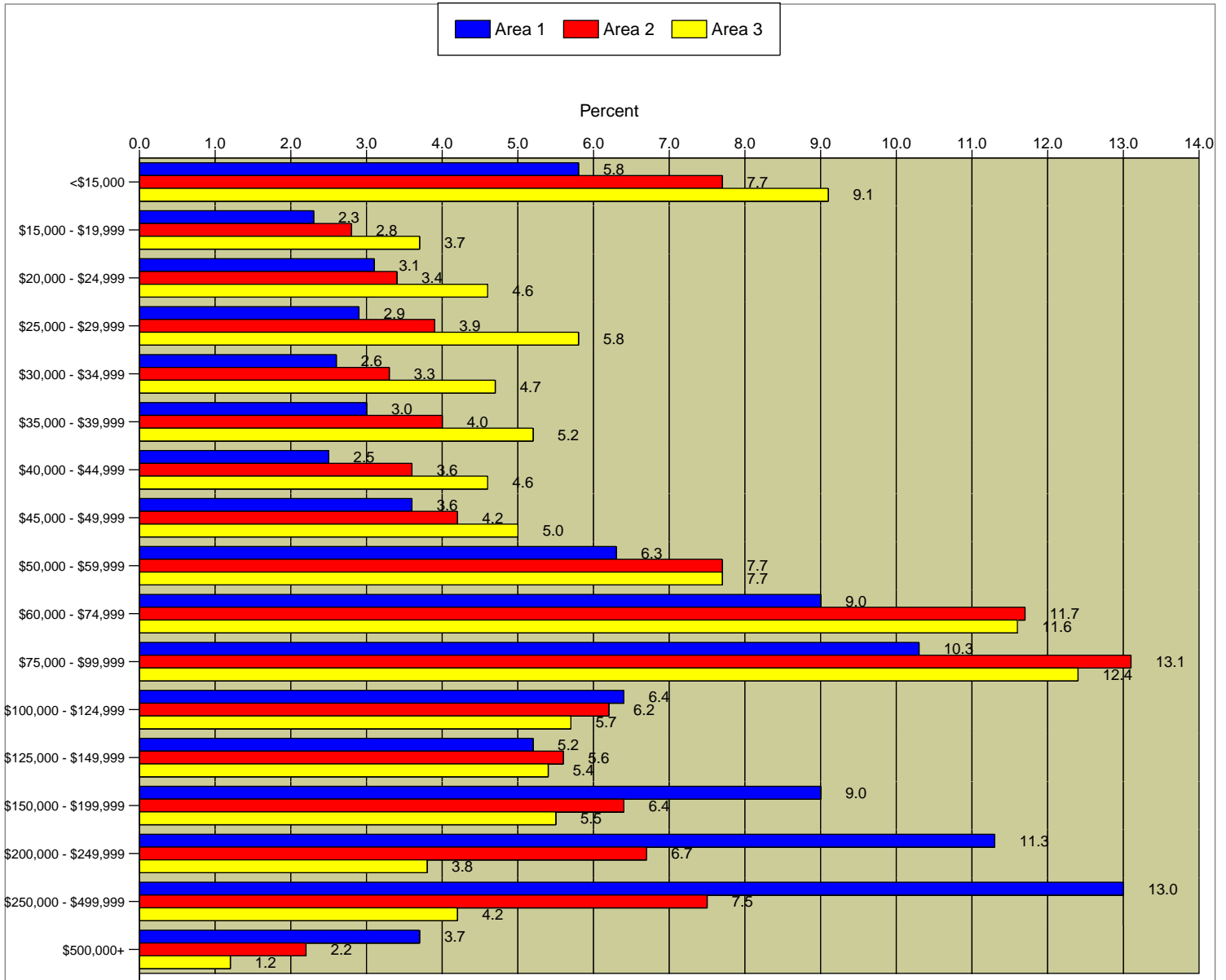
Longitude: -96.809829

Radius: 1 Miles

Radius: 3 Miles

Radius: 5 Miles

### 2009 Household Income



### Median Household Income

|   |          |          |          |
|---|----------|----------|----------|
| 2000  | \$84,878 | \$56,993 | \$44,365 |
| 2009  | \$95,806 | \$71,428 | \$59,589 |
| 2014  | \$95,633 | \$73,096 | \$62,337 |
| 2000 - 2009 Median Household Income Annual Rate | 1.32%    | 2.47%    | 3.24%    |
| 2009 - 2014 Median Household Income Annual Rate | -0.04%   | 0.46%    | 0.91%    |

|                       |           |           |          |
|-----------------------|-----------|-----------|----------|
| 2009 Median Net Worth | \$488,374 | \$111,353 | \$44,990 |
|-----------------------|-----------|-----------|----------|

Data Note: Detail may not sum to totals due to rounding. Income represents annual income for the preceding year. Income for 2009 and 2014 is expressed in current dollars, including an adjustment for inflation.

Source: U.S. Bureau of the Census, 2000 Census of Population and Housing. ESRI forecasts for 2009 and 2014.



# Self Storage Express Pack

Prepared by STDBOnline

5956 Sherry Lane, Dallas, Texas, 75225

|                       |                       |                       |                       |
|-----------------------|-----------------------|-----------------------|-----------------------|
| Latitude: 32.861976   | 32.861976, -96.809829 | 32.861976, -96.809829 | 32.861976, -96.809829 |
| Longitude: -96.809829 | Radius: 1 Miles       | Radius: 3 Miles       | Radius: 5 Miles       |

## 2000 Households by Type

|                              |       |        |         |
|------------------------------|-------|--------|---------|
| Total                        | 5,399 | 52,736 | 157,201 |
| Family Households            | 55.8% | 50.0%  | 51.7%   |
| Married-couple Family        | 48.8% | 40.4%  | 38.1%   |
| With Related Children        | 23.9% | 19.3%  | 19.2%   |
| Other Family (No Spouse)     | 7.0%  | 9.6%   | 13.6%   |
| With Related Children        | 4.0%  | 5.4%   | 8.2%    |
| Nonfamily Households         | 44.2% | 50.0%  | 48.3%   |
| Householder Living Alone     | 39.7% | 40.3%  | 38.0%   |
| Householder Not Living Alone | 4.5%  | 9.7%   | 10.3%   |

## 2000 Housing Units

|                               |       |        |         |
|-------------------------------|-------|--------|---------|
| Owner Occupied Housing Units  | 5,714 | 56,096 | 168,695 |
| Renter Occupied Housing Units | 68.7% | 48.1%  | 38.3%   |
| Vacant Housing Units          | 25.8% | 45.9%  | 54.9%   |
|                               | 5.5%  | 6.0%   | 6.8%    |

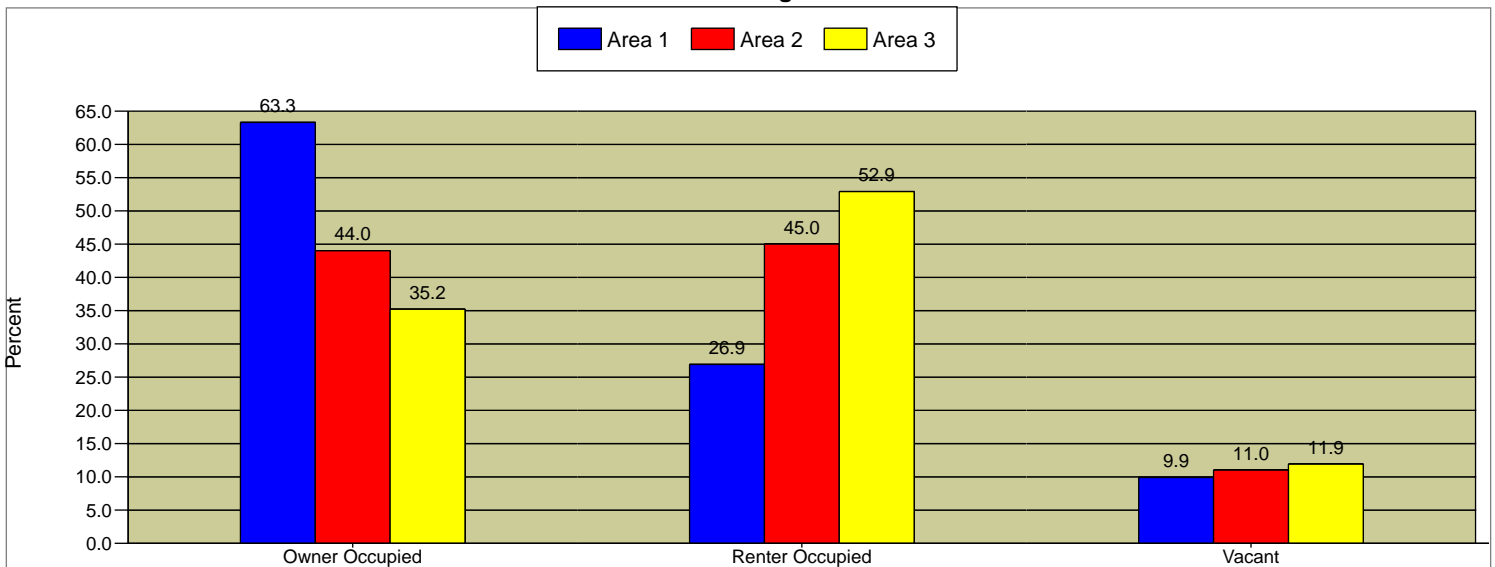
## 2009 Housing Units

|                               |       |        |         |
|-------------------------------|-------|--------|---------|
| Owner Occupied Housing Units  | 5,824 | 58,359 | 181,669 |
| Renter Occupied Housing Units | 63.3% | 44.0%  | 35.2%   |
| Vacant Housing Units          | 26.9% | 45.0%  | 52.9%   |
|                               | 9.9%  | 11.0%  | 11.9%   |

## 2014 Housing Units

|                               |       |        |         |
|-------------------------------|-------|--------|---------|
| Owner Occupied Housing Units  | 5,832 | 58,702 | 184,291 |
| Renter Occupied Housing Units | 64.3% | 45.0%  | 36.3%   |
| Vacant Housing Units          | 25.8% | 43.7%  | 52.0%   |
|                               | 9.9%  | 11.3%  | 11.8%   |

2009 Housing Units



## Median Home Value

|      |           |           |           |
|------|-----------|-----------|-----------|
| 2000 | \$387,212 | \$310,970 | \$191,107 |
| 2009 | \$455,710 | \$356,286 | \$213,568 |
| 2014 | \$498,468 | \$387,123 | \$229,350 |

Data Note: Detail may not sum to totals due to rounding.

Source: U.S. Bureau of the Census, 2000 Census of Population and Housing. ESRI forecasts for 2009 and 2014.